

COURSE GUIDE

PHY 361 GEOPHYSICS II

Course Team Engr. O. Akintola (Course Developer/Writer) –
UNILAG
Dr. Oyedele (Course Editor) – UNILAG
Dr. S.O Ajibola (Programme Leader/Course
Coordinator) – NOUN
Mr. Momoh Kabiru Onotu (Course Reviewer)



NATIONAL OPEN UNIVERSITY OF NIGERIA

© 2023 by NOUN Press
National Open University of Nigeria
Headquarters
University Village
Plot 91, Cadastral Zone
Nnamdi Azikiwe Expressway
Jabi, Abuja

Lagos Office
14/16 Ahmadu Bello Way
Victoria Island, Lagos

e-mail: centralinfo@nou.edu.ng
URL: www.nou.edu.ng

All rights reserved. No part of this book may be reproduced, in any form or by any means, without permission in writing from the publisher

Printed 2023

ISBN: 978-978-058-650-4

CONTENTS

Introduction.....	iv
What you will Learn in this Course	iv
Course Aims.....	iv
Course Objectives.....	iv
Working through this Course.....	v
Course Materials.....	v
Study Units.....	vi
Assessment.....	vii
Tutor-Marked Assignmentvii
Final Examination and Grading	viii
Presentation Schedule.....	viii
Course Marking Scheme.....	viii
Facilitators/Tutors and Tutorials.....	viii
Summary.....	ix

INTRODUCTION

PHY 361 Geophysics II is a three-credit unit course available to all students to take towards their B.Sc. Physics, B.Sc. Physics Education and other related programmes in the School of Science.

WHAT YOU WILL LEARN IN THIS COURSE

This course will introduce you to the four laws of thermodynamics and their applications; and also, will prepare you for other specialized courses in physics like atmospheric thermodynamics, geophysics, statistical physics and thermal physics among others.

COURSE AIMS

The aim of this course is to give you a comprehensive teaching on the principles and applications of geophysical methods; it is also to prepare you towards scientific advancement in atmospheric physics, thermodynamics, and thermal physics among others.

COURSE OBJECTIVES

To achieve the set aims, the course has a set of objectives. Each unit has specific objectives which are included at the beginning of the unit. You should read these objectives before you study the unit. You may wish to refer to them during your study to check on your progress. You are advised to always look at the unit objectives after completing the unit.

Below are the comprehensive objectives of the course. By meeting these objectives, you should have achieved the aims of the course as a whole. In addition to the aims above, this course sets to achieve some objectives. Thus, after going through the course, you should be able to:

- explain that seismic wave is the basic measuring rod used in seismic prospecting
- be familiar with the basic physical principles governing its propagation characteristics and seismic velocities
- explain that seismic waves are generally referred to as elastic waves
- describe the characteristics of seismic waves and formation of other types of waves.
- identify the seismic sources
- discuss the usefulness of hammers in application of seismic waves

- state the uses of explosives in seismic works
- interpret simple seismic recorders
- identify seismographs
- describe common instruments used in seismic signals recording
- give a descriptive treatment of the more important aspects, concentrating on the developing fundamental understanding of these methods and the physical principles on which they are based
- identify the instruments used in this seismic survey
- state the theory behind seismic reflection.

WORKING THROUGH THIS COURSE

To complete this course, you are required to read each study unit, read the textbooks and read other materials which may be provided by NOUN.

Each unit contains Self-Assessment Exercises and at certain points in the course you would be required to submit assignments for assessment purposes. At the end of the course, there is a final examination. The course should take you about a total of 17 weeks to complete. Listed below are all the components of the course; what you have to do and how you should allocate your time to each unit in order to complete the course successfully.

This course entails that you spend a lot of time to read. We advise that you avail yourself the opportunity of attending the tutorial sessions where you have the opportunity of comparing your knowledge with that of other learners.

COURSE MATERIALS

The following are the major components of this course:

1. The Course Guide
2. Study Units
3. Tutor-Marked Assignments(TMAs)
4. Presentation Schedule
5. References/Further Reading

STUDY UNITS

The study units in this course are as follows:

Module 1

Unit1	Seismic Methods
Unit2	Seismic Sources

Unit3	Detection of Seismic waves	Unit4	Recording Seismic Signals
-------	----------------------------	-------	---------------------------

Module 2

Unit1	Seismic Reflection
Unit2	Reflection Surveys

Module 3

Unit1	Seismic Refraction
Unit2	Field Interpretation
Unit3	Limitations of Refraction Methods

The first unit of the Module 1 focuses on the basic concept and definitions in seismic methods. The second unit reviews the mathematical tools required for better understanding of the course while third unit focuses on detection of seismic waves. Unit four is about recording seismic signals.

Module 2 comprises two study units. Units one and two treat the seismic reflection methods, surveying, profiling and its consequences.

Module 3 comprises three study units. Unit one is on seismic refraction methods, unit two treats field interpretation while unit three focuses on the limitation of refraction methods.

Each study unit consists of three hours work. Each study unit includes introduction, specific objectives, directions for study, reading materials, conclusions, summary, tutor- marked assignments (TMAs), references and other resources. The units direct you to work on exercises related to the required readings. In general, these exercises test you on the materials you have just covered or require you to apply it in some way and thereby assist you to evaluate your progress and to reinforce your comprehension of the material. Together with TMAs, these exercises will help you in achieving the stated learning objectives of the individual units and of the course as a whole.

ASSESSMENT

There are three aspects of the assessment of the course. The first is made-up of self-assessment exercises; the second consists of the tutor-marked assignments while the third is the written examination/end of the course examination.

You are advised to do the exercises. In tackling the assignments, you are expected to apply information, knowledge and techniques you gathered

during the course. The assignments must be submitted to your facilitator for formal assessment in accordance with the deadlines stated in the presentation schedule and the assignment file. The work you submit to your tutor for assessment will count for 30% of your total course work. At the end of the course, you will need to sit for a final or end of course examination of about three hours duration. This examination will count for 70% of your total course mark.

TUTOR-MARKED ASSIGNMENT (TMA)

The TMA is the continuous assessment component of your course. It accounts for 30% of the total score. You will be given at least four TMAs to answer. Three of these must be answered before you are allowed to sit for the end of course examination. The TMAs will be given by your facilitator and you are to return each assignment to your facilitator/tutor after completion. Assignment questions for the units in this course are contained in the assignment file. You will be able to complete your assignment from the information and the material contained in your reading, references and study units. However, it is desirable in all degree levels of education to demonstrate that you have read and researched more into your references, which will give you a wider view point and may provide you with a deeper understanding of the subject.

Make sure that each assignment reaches your facilitator/tutor on or before the deadline mentioned by the course coordinator in the presentation schedule and assignment file. If, for any reason, you cannot complete your work on time, contact your facilitator/tutor before the assignment is due to discuss the possibility of an extension. Extensions will not be granted after the due date unless there are exceptional circumstances.

FINAL EXAMINATION AND GRADING

The end of course examination for thermodynamics will be about three hours and it has a value of 70% of the total course work. The examination will consist of questions which will reflect the self- assessment exercises, practice exercises and tutor-marked assignments you have previously encountered. All areas of the course will be assessed.

You are advised to use the time between finishing the last unit and sitting for the examination to revise the entire course. You might find it useful to review your self-assessment exercise, tutor-marked assignments and comments on them before the examination.

PRESENTATION SCHEDULE

Your course materials have important dates for the early and timely completion and submission of your tutor-marked assignments and

attending tutorials. You should remember that you are requested to submit all assignments by the stipulated time and date. You should guard against falling behind in your work.

COURSE MARKING SCHEME

Assignment	Marks
Assignments 1- 4	Four assignments; best three marks of the four count at 10% each – 30% of the course marks
End of course examination	70% of overall course marks
Total	100% of course marks

FACILITATORS/TUTORS AND TUTORIALS

There are 16 hours of tutorials provided in support of this course. You will be notified of the dates, time and location of these tutorials as well as the name and phone number of your facilitator, as soon as you are allocated a tutorial group.

Your facilitator will mark and comment on your assignments, keep a close watch on your progress and any difficulty you might face and provide assistance to you during the course. You are expected to mail the answers for the Tutor-Marked Assignment to your facilitator before the scheduled date (at least two working days are required). They will be marked by your tutor and returned to you as soon as possible.

Do not delay to contact your facilitator by telephone or e-mail if you need assistance.

The following might be circumstances in which you would find assistance necessary, hence you would have to contact your facilitator if:

- you do not understand any part of the study or the assigned readings
- you have difficulty with the self-tests
- you have a question or problem with an assignment or with the grading of an assignment.

You should endeavour to attend the tutorials. This is the only chance to have face to face contact with your course facilitator and to ask questions which may/may not be answered instantly. You can raise any problem encountered in the course of your study.

To gain much benefit from the course tutorials, prepare a question list before attending them. You will learn a lot from participating actively in

discussions.

SUMMARY

PHY 361 is a course that intends to give a comprehensive teaching on the principles and applications of electrical and electromagnetic methods. Upon completion of this course, you will be able to explain each of the four methods of the topics and also give the implications and applications of these methods. In addition, you will be able to answer the following types of questions:

- what are seismic waves?
- state the law of reflection
- state the Snell's law
- with the aid of a simple diagram, explain and show the following concepts in seismic theory: –reflection, refraction, and head waves
- explain the following types of waves -primary wave, shear wave
- love wave, body wave, Rayleigh wave define the following:
- seismometers
- hydrophones
- noise
- describe geophones with the aid of a simple diagram
- differentiate between a geophones and hydrophones
- differentiate with examples, between coherent noise and random noise
- what is seismic reflection?
- what do you understand by the term acoustic impedance of a rock?
- explain the following with the aid of diagrams:
- multiple reflection
- simple multiple
- peg leg
- intraformational multiples.
- state the dix formular and define all the parameters and variables
- what is normal move-out?
- derive a move-out equation for a horizontal reflector explain the following terminologies:
- reflection survey
- geometric distortion in relation to reflection survey. write short notes on the following in relation to reflection:
- spread length
- CMS - Common Mid-point Shooting
- array

- depth conversion.

These are, by no means, some of the questions you should be able to answer upon completion of this course. The basic thing is to understand all that you have learnt in this course and be able to apply them in solving different problems on the course.

We wish you a splendid study time as you go through the course.



**MAIN
COURSE**

CONTENTS

Module 1	1
Unit 1	Seismic Methods	1
Unit 2	Seismic Sources	10
Unit 3	Detection of Seismic Waves	17
Unit 4	Recording Seismic Signals	26
Module 2	28
Unit 1	Seismic Reflection	28
Unit 2	Reflection Surveys	35
Module 3	43
Unit 1	Seismic Refraction	43
Unit 2	Field Interpretation	51
Unit 3	Limitation of Refraction Methods	58

MODULE 1

Unit1	Seismic Methods
Unit2	Seismic Sources
Unit3	Detection of Seismic Waves
Unit4	Recording Seismic Signals

UNIT 1 SEISMIC METHODS

CONTENTS

1.0	Introduction
2.0	Objectives
3.0	Main Content
3.1	General Introduction
3.2	Seismic Waves
3.3	Types of Elastic Wave
3.4	Seismic Velocities
3.5	Velocities and the Time-Average Equation
3.6	Ray-Path Diagrams
3.7	Reflection and Refraction
4.0	Conclusion
5.0	Summary
6.0	Tutor-Marked Assignment
7.0	References/Further Reading

1.0 INTRODUCTION

In this unit, you will be introduced to the basic concept of seismic methods, one of the geophysical techniques widely employed in exploration work. Other geophysical techniques that are widely employed for exploration work include gravity, magnetic, electrical, and electromagnetic methods. Less common methods involve the measurement of radioactivity and temperature at or near the earth's surface and the air. Some of these methods are used entirely in the search for oil and gas.

Seismic methods are the most effective and the most expensive of all the geophysical techniques used to investigate layered media. Features common to reflection and refraction surveys are also discussed in this section.

2.0 OBJECTIVES

At the end of this unit, you should be able to:

- explain seismic wave as the basic measuring rod used in seismic prospecting
- discuss the basic physical principles governing seismic wave's propagation, characteristics and seismic velocities
- discuss reasons seismic waves are generally referred to as elastic waves
- describe the characteristics of seismic waves and formation of other types of waves.

3.0 MAINCONTENT

3.1 General Introduction

The geophysical techniques most widely employed for exploration work are the seismic, gravity, magnetic, electrical, and electromagnetic methods. Less common methods involve the measurement of radioactivity and temperature at or near the earth's surface and in the air. Some of these methods are used almost entirely in the search for oil and gas. Others are used primarily in exploring for solid minerals. Most of them may be employed for either objective. Seismic, magnetic, and gravity prospecting are the chief tools for hydrocarbon exploration; seismic and electrical methods are the two chief tools used for mineral exploration.

Seismic Reflection Method: With this method – by far the most widely used geophysical technique – the structure of subsurface formation is mapped by measuring the times required for a seismic wave (or pulse), generated in the earth by a near- surface after reflection from interfaces between formations having different physical properties. The reflections are recorded by detecting instruments responsive to ground motion. They are laid along the ground at distances from the point of generation, which are generally small compared with the depth of reflector. Variations in the reflection times from place to place on the surface usually indicate structural features in the strata below. Depths to reflecting interfaces can be estimated from the record times and velocity information that can be obtained either from the reflected signals themselves or from surveys in wells. Reflections from depths of 30,000 ft or more can normally be observed by combining the reflections from the repeated source applications, so is the most area's geologic structure can be determined throughout sedimentary section.

With reflection methods, one can locate and map such features as anticlines, faults, salt domes, and reefs. Many of these are associated with the accumulation of oil and gas. Major convergences caused by depositional thinning can be detected from reflection sections. The resolution of the methods is now approaching fineness adequate for finding stratigraphic traps such as pinch outs or facies changes. However, successful exploration for stratigraphic oil accumulations by reflection techniques requires skillful coordination of geological and seismic information.

While current technological improvements have made it possible to obtain usable reflection data in many areas where reflections were formerly too poor to map, there are still places where reflection does not yield reliable information even though highly sophisticated data acquisition and processing techniques are used. In such intractable areas, other geophysical and geological methods must be employed.

Seismic Refraction Methods: In refraction surveying, the detecting instruments record seismic signals at a distance from the shot point that is large compared with the depth of the horizon to be mapped. The seismic waves must thus travel large horizontal distances through the earth, and the times required for the travel at various source-receiver distances give information on the velocities and depths of the subsurface formations along which they propagate. Although the refraction method does not give as much information or as precise and unambiguous a structural picture as reflection, it provides data on the velocity of the refracting beds. The method made it possible to cover a given area more quickly and economically than with the reflection method, though with a significant loss of detail and accuracy.

Refraction is particularly suitable where the structure of a high-speed surface, such as the basement or the top of a limestone layer, is the target of geological interest. If the problem is to determine the depth and shape of a sedimentary basin by mapping the basement surface, and if the sedimentary basin by mapping the basement surface, and if the sedimentary rocks have a consistently lower seismic velocity than do the basement formations, refraction was in the past an effective and economical approach for achieving this objective. Airborne magnetic, and to some extent, gravity has replaced seismic refraction for such purposes. Because velocities in salt and evaporates are often greater than in surrounding formations, refraction has been useful in mapping diapiric features such as salt domes. Under favorable circumstances, this technique has been used to detect and determine the throw of faults in high-speed formations, such as dense limestone and basement materials.

Despite its advantages, refraction is now rarely employed in oil exploration because of large-scale field operations required. Also, the reflection methods have developed to the point that it can now yield nearly all the formation that refraction shooting could produce as well as relatively unambiguous and precise structural information unavailable from refracted waves.

3.2 Seismic Waves

A seismic wave is acoustic energy transmitted by vibration of rock particles. Low-energy waves are approximately elastic; leaving the rock mass unchanged by their passage, but close to a seismic source the rock may be shattered and permanently distorted.

3.3 Types of Elastic Wave

When a sound wave travels in air, the molecules oscillate backwards and forwards in the direction of energy transport. This pressure or 'push' wave thus travels as a series of compressions and rarefactions. The pressure wave in a solid medium has the highest velocity of any of the possible wave motions and is therefore also known as the primary wave or simply the *P wave*. Particles vibrating at right angles to the direction of energy flow (which can only happen in a solid) create an *S (shear, 'shake' or, because of its relatively slow velocity, secondary) wave*. The velocity in many consolidated rocks is roughly half the *P*-wave velocity. It depends slightly on the plane in which the particles vibrate but these differences are not significant in small-scale surveys.

P and *S* waves are *body waves* and expand within the main rock mass. Other waves, known as *Love waves*, are generated at interfaces, while particles at the earth's surface can follow elliptical paths to create *Rayleigh waves*. Love and Rayleigh waves may carry a considerable proportion of the source energy but travel very slowly. In many surveys, they are simply lumped together as the ground roll.

3.4 Seismic Velocities

The "seismic velocities" of rocks are the velocities at which wave motions travel through them. They are quite distinct from the continually varying velocities of the individual oscillating rock particles. Any elastic-wave velocity (V) can be expressed as the square root of an elastic modulus divided by the square root of density (ρ). For *P* waves the elongational elasticity, j is appropriate, for *S* waves the shear modulus, μ .

The equations:

$$V_p = (j/\rho) \quad V_s = (\mu/\rho)$$

Suggests that high density rocks should have low seismic velocities, but because elastic constants normally increase rapidly with density, the reverse is usually true. Salt is the only common rock having a high velocity but a low density.

If the density and P and S wave velocities of a rock mass are known, all the elastic constants can be calculated, since they are related by the equations:

$$(V_p/V_s)^2 = 2(1 - \sigma)/(1 - 2\sigma) \quad \sigma = [2 - (V_p/V_s)^2]/2[1 - (V_p/V_s)^2]$$

$$j = q(1 - \sigma)/(1 + \sigma)(1 - 2\sigma) \quad \mu = q/2(1 + \sigma) \quad K = q/3(1 - 2\sigma)$$

Where σ is the Poisson ratio, q is the Young's modulus and K is the bulk modulus.

It follows that:

$$j = K + 4\mu/3$$

The equation above implies that P wave always travels faster than an S wave in the same medium. The Poisson ratio is always less than 0.5 and at this limit, V_p/V_s is infinite.

Most seismic surveys provide estimates only for P-wave velocities, which are rather rough guides to rock quality. Figure 1.1 shows ranges of velocity for common rocks and also their *rippabilities* defined by whether they can be ripped apart by a spike mounted on the back of a bulldozer or not.

3.5 Velocities and the Time-Average Equation

Within quite broad limits, the velocity of a mixture of different materials can be obtained by averaging the transit times (the reciprocals of velocities) through the pure constituents, weighted according to the relative amounts present. The principle can be used even when, as in Example 1.1, one of the constituents is a liquid.

Example 1.1

$$V_p (\text{quartz}) = 5200 \text{ ms}^{-1}$$

$$V_p (\text{water}) = 1500 \text{ ms}^{-1}$$

P-wave velocity in sandstone, 80% quartz, 20% water-filled porosity, is given by:

$$1/V_p = 0.8/5200 + 0.2/1500$$

$$= 0.000287$$

$$\text{i.e. } V_p = 3480 \text{ ms}^{-1}$$

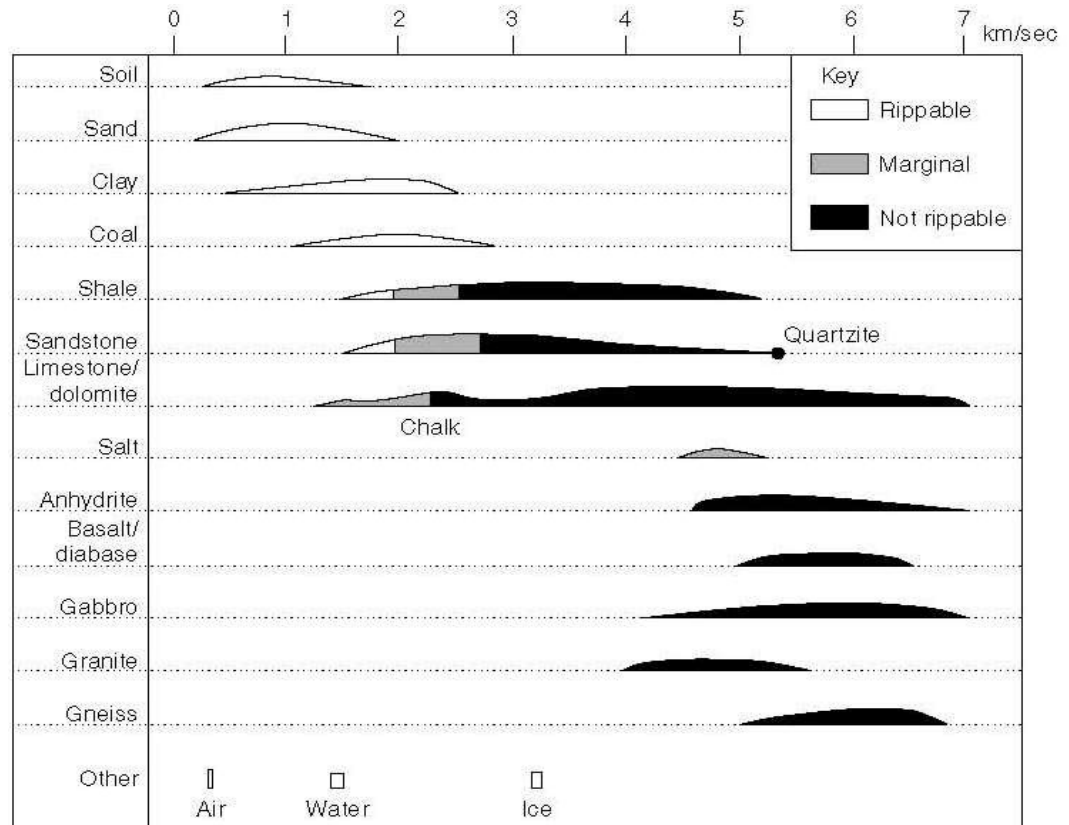


Fig. 1.1: Ranges of P-wave Velocities and Rip abilities in Common Rocks. The Vertical axis, for each Rock type, is intended to show approximately the Relative Numbers of Samples that would show a given Velocity

In dry rocks, the pore spaces are filled with air ($V = 330 \text{ ms}^{-1}$) rather than water. Time averaging cannot be applied quantitatively to gas-filled pores, but dry materials generally have very low P-wave velocities. If they are poorly consolidated and do not respond elastically, they may also strongly absorb S-waves. Poorly consolidated water-saturated materials generally have velocities slightly greater than that of water, and the water table is often a prominent seismic interface.

Weathering normally increases porosity, and therefore reduces rock velocities. This fact underlies the rippability ranges shown in Figure 1.1.

Few fresh, consolidated rocks have velocities of less than about 2200 ms^{-1} , and rocks that are rippable are generally also at least partly weathered.

3.6 Ray-Path Diagrams

It is convenient to identify the important travel paths by drawing seismic *rays*, to which the laws of geometrical optics can be applied, at right angles to the corresponding wave fronts. Ray-path theory works less well in seismology than in optics because the most useful seismic wavelengths are between 25 and 200m, and thus comparable with survey dimensions and interface depths. Wave effects can be significant under these circumstances but field interpretation can nonetheless be based on ray-path approximations.

3.7 Reflection and Refraction

When a seismic wave encounters an interface between two different rock types, some of the energy is reflected and the remainder continues on its way at a different angle, i.e., is refracted. The law of reflection is very simple; the angle of reflection is equal to the angle of incidence (Figure 1.2a). Refraction is governed by *Snell's law*, which relates the angles of incidence and refraction to the seismic velocities in the two media:

$$\sin i / \sin r = V_1 / V_2$$

If V_2 is greater than V_1 , refraction will be towards the interface. If $\sin i$ equals V_1/V_2 , the refracted ray will be parallel to the interface and some of its energy will return to the surface as a *head wave* that leaves the interface at the original angle of incidence (Figure 1.2b). At greater angles of incidence there can be no refracted ray and all the energy is reflected. When drawing ray paths for either reflected or critically refracted waves, allowance must be made for refraction at all shallower interfaces. Only the *normal-incidence* ray, which meets all interfaces at right angles, is not refracted.

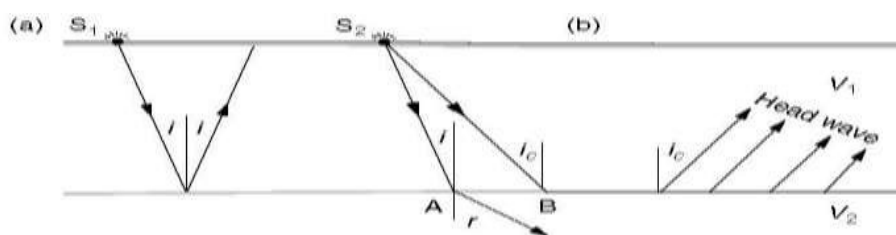


Fig.1.2: (a) Reflection and (b) Refraction: Simple Refraction Occurs at A while Critical Refraction Occurs at B

4.0 CONCLUSION

A seismic wave is properly described in terms of wave fronts, which define the points the wave has reached at a given instant. However, only a small part of a wave front is of interest in any geophysical survey, since only a small part of the energy returns to the surface at points where detectors have been placed.

5.0 SUMMARY

When seismic energy is released suddenly at a point P near the surface of homogeneous medium, part of the energy propagates through the body of the medium as seismic body waves. The remaining part of the seismic energy spreads out over the surface as a seismic surface wave, which is analogous to the ripples on the surface of a pool of water into which the stone has been thrown.

When a body wave reaches a distance ' r ' from its source in a homogeneous medium, the wave fronts (defined as the surface in which all particles vibrate with the same phase) has a spherical shape and the wave is called *aspherical* wave. As the distance from the source increases, the curvature of the spherical wave front decreases. At great distances from the source, the wave front is so flat that it can be considered to be a plane and the seismic wave is called a *plane* wave. The direction perpendicular to the wave front is called the seismic ray path. The description of harmonic waves in plane waves is simpler than for spherical waves, because for plane waves, we can use orthogonal Cartesian coordinates. Even for plane waves, the mathematical description of the three-dimensional displacements of the medium is fairly complex. However, we can learn quite a lot about body wave propagation from a simpler, less rigorous description.

6.0 TUTOR-MARKEDASSIGNMENT

1. What are seismic waves?
 - a. State the law of reflection
 - b. State the Snell's law
2. With the aid of a simple diagram, explain and show the following concept in seismic theory.
 - a. Reflection
 - b. Refraction
 - c. Heatwaves
3. Explain the following types of waves:
 - a. Primary wave
 - b. Shear wave
 - c. Love wave

- d. Body wave
- e. Rayleigh wave.

7.0 REFERENCES/FURTHER READING

William L. (2013). *Fundamentals of Geophysics* (2nd Edition).
Cambridge University Press, p.121.

John, M. (2003). *Field Geophysics*. (3rd ed.). England: John Wiley and
Sons Ltd., p. 249.

Reynolds, J. M. (1997). *An Introduction to Applied and Environmental
Geophysics*. Chichester: Wiley, p. 796.

Sharma, P. V. (1997). *Environmental and Engineering Geophysics*.
Cambridge: Cambridge University Press, p. 475.

Telford, W. M., Geldart, L. P., Sheriff, R. E. & Keys, D. A. (1990).
Applied Geophysics. (2nd ed.). Cambridge: Cambridge
University Press, p.770.

Video Link1 Video Link2

UNIT 2 SEISMIC SOURCES

CONTENTS

- 1.0 Introduction
- 2.0 Objectives
- 3.0 Main Content
 - 3.1 Hammers
 - 3.2 Other Impact Sources
 - 3.3 Explosives
 - 3.4 Safety
 - 3.5 time Breaks
- 4.0 Conclusion
- 5.0 Summary
- 6.0 Tutor-Marked Assignment
- 7.0 References/Further Reading

1.0 INTRODUCTION

The traditional seismic source is a small charge of dynamite. Impact and vibratory sources are now more popular but explosives are still quite commonly used.

2.0 OBJECTIVES

At the end of this unit, you should be able to:

- explain clearly, the seismic sources
- discuss the usefulness of hammers in application of seismic waves
- discuss other impact sources
- highlight the uses of explosives in seismic works.

3.0 MAINCONTENT

3.1 Hammers

A 4- or 6-pound sledgehammer provides a versatile source for small-scale surveys. The useful energy produced depends on ground conditions as well on strength and skill. Hammers can nearly always be used in refraction work on spreads 10 to 20 m long but very seldom where energy has to travel more than 50m.

The hammer is aimed at a flat plate, the purpose of which is not so much to improve the pulse (hitting the ground directly can sometimes provide

more seismic energy) but to stop the hammer abruptly and so provide a definite and repeatable shot instant. Inch-thick aluminum or steel plates used to be favoured, but are now being replaced by thick rubber discs that last longer and are less painfully noisy. The first few hammer blows are often rather ineffective, as the plate needs to “bed down” in the soil. Too much enthusiasm may later embed it so deeply that it has to be dug out.

3.2 Other Impact Sources

More powerful impact sources must be used in larger surveys. Weights of hundreds of kilograms can be raised by portable hoists or cranes and then dropped (Figure 2.1). The minimum release height is about 4 m, even if a shorter drop would provide ample energy, since rebound of the support when the weight is released creates its own seismic wave strain. A long drop allows these vibrations to die away before the impact occurs. Tractor-mounted posthole drivers, common in farming areas, are also convenient sources. The weight drops down a guide and is raised by a pulley system connected to the tractor power take-off.

Relatively small (70 kg) weights falling in evacuated tubes have sometimes been used. The upper surface of the weight is exposed to the air, and effectively several hundred extra kilograms of atmosphere are also dropped. The idea is elegant but the source is difficult to transport because the tube must be strong and therefore heavy and must be mounted on a trailer, together with a motor-driven compressor to pump out the air. Vibration sources are widely used in large-scale reflection surveys but produce data that need extensive and complex processing.

3.3 Explosives

Almost any type of (safe) explosive can be used for seismic work, particularly if the shot holes are shallow and the charges will not be subject to usual temperatures or pressures.



Fig. 2.1: Impact Source

A half-ton weight being dropped from a portable crane during a survey of the low-velocity layer

Cord explosives, used in quarry blasting to introduce delays into firing sequences, are rather safer to handle than normal gelignite and can be fed into shot holes prepared by driving metal rods or crowbars into the ground. Detonators used on their own are excellent sources for shallow reflection surveys where high resolution is needed. Often, much of the energy delivered by an explosion is wasted in shattering rock near the shot point, and seismic waves are produced much more efficiently by shots fired in a metre of water or so. This effect is so marked that, if shot position is not critical, it can be worth going tens or even hundreds of metres away from the recording spread in order to put the charge in a river. In dry areas, significant improvements can be obtained by pouring water down shot holes.

Electrical firing is normal when using explosives but with ordinary detonators there is a short delay between the instant at which the filament burns through, which provides a time reference, and the time at which the main charge explodes. **Zero-delay** detonators should be used for seismic work and total delays through the entire system, including the recorders, should be routinely checked using a single detonator buried a few inches away from a geophone.

Explosives involve problems with safety, security and bureaucracy.

They must be used in conformity with local regulations, which usually require separate secure and licensed stores for detonators and gelignite. In many countries, the work must be supervised by a licensed shot-firer, and police permission is required almost everywhere. Despite these disadvantages, and despite the headaches that are instantly produced if gelignite comes into contact with bare skin, explosives are still used. They represent potential seismic energy in its most portable form and are virtually essential if signals are to be detected at distances of more than 50 m.

A variety of explosive-based methods are available which reduce the risks. Seismic waves can be generated by devices which fire lead slugs into the ground from shotgun-sized cartridges, but the energy supplied is relatively small, and a firearms certificate may be needed, at least in the UK. Another approach is to use blank shotgun cartridges in a small auger which incorporates a firing chamber, combining the shot hole and the shot. Even this seldom provides more energy than a blow from a well-swung hammer, and is less easily repeated.

3.4 Safety

Large amounts of energy must be supplied to the ground if refractions are to be observed from depths of more than a few metres or reflections from depths of more than a few tens of metres, and such operations are inherently risky. The dangers are not greatest with explosives nor is it safe to stand beneath a half-ton weight dropping from a height of 4 m.

Explosives should only be used by experienced (and properly licensed) personnel. Even this does not necessarily eliminate danger, since experts in quarry blasting often lack experience in the special conditions of seismic surveys. If there is an accident, much of the blame will inevitably fall on the party chief who will, if he is wise, keep his own eye on safety.

The basic security principle is that the shot-firer must be able to see the shot point. Unfortunately, some seismographs have been designed so that the shot is triggered by the instrument operator, who can seldom see anything and who is in any case preoccupied with checking noise levels. If such an instrument is being used, it must at least be possible for firing to be prevented by someone who is far enough from the shot point to be safe but close enough to see what is happening. This can be achieved if, after the shot hole has been charged, the detonator is first connected to one end of an expendable cable 20 or 30 m long. Only when the shot point is clear should the other end of this cable be connected to the cable

from the firing unit. Firing can then be prevented at any time by pulling the two cables apart.

Unless ‘sweaty’ gelignite is being used (and the sight of oily nitroglycerine oozing out of the packets should be sufficient warning to even the least experienced), modern explosives are reasonably insensitive to both heat and shock. Detonators are the commonest causes of accidents. Although their explosive power is small, they have caused loss of fingers and even hands. If fired on their own as low energy sources, they should always be placed in well-tamped holes, since damage or serious injury can be caused by fragments of the metal casing.

3.5 time Breaks

In any seismic survey, the time at which the seismic wave is initiated must be known. In some instruments, this appears on the record as a break in one of the traces (the *shot break* or *time break*). On most modern instruments, it actually defines the start of the record. Time-break pulses may be produced in many different ways. A geophone may be placed close to the source, although this is very hard on the geophone.

Explosive sources are usually fired electrically, and the cessation of current flow in the detonator circuit can provide the required signal. Alternatively, a wire can be looped around the main explosive charge, to be broken at the shot instant. This technique can be used on the rare occasions when charges are fired using lit fuses.

Hammer surveys usually rely on making rather than breaking circuits. One method is to connect the hammer head to one side of the trigger circuit and the plate (assuming it is metal, not rubber) to the other. Although this sounds simple and foolproof, in practice the repeated shocks suffered by the various connections are too severe for long-term reliability. In any case, the plates themselves have rather short lives, after which new connections have to be made. It is more practical to mount a relay on the back of the hammer handle, just behind the head, that closes momentarily when the hammer hits the plate (Figure 2.2).

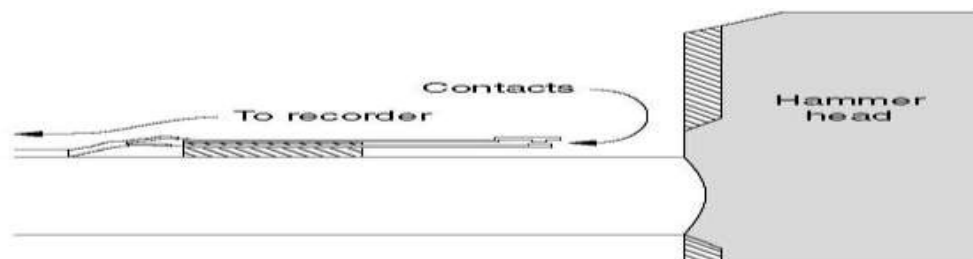
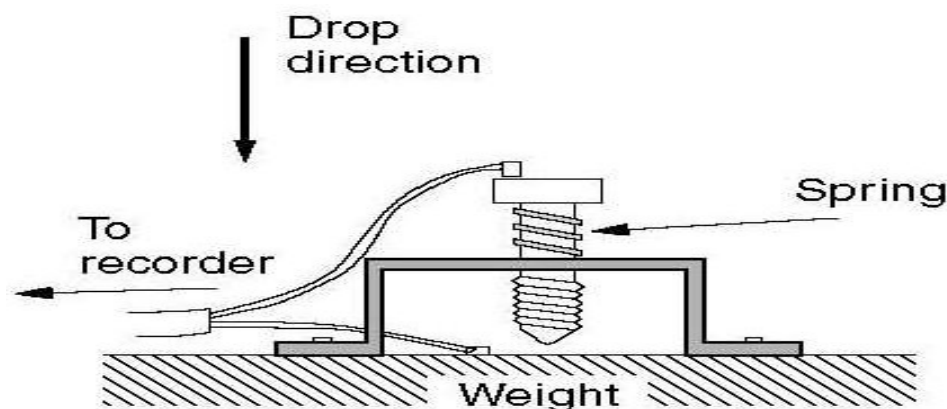


Fig.2.2: ‘Post-Office Relay’ Impact Switch on the back of a Sledgehammer Handle

It will close late, or not at all, if the hammer is used the wrong way round. Solid-state switches sold by some seismograph manufacturers give more repeatable results but are expensive and rather easily damaged. The cable linking the trigger switch on a hammer to the recorder is always vulnerable, tending to snake across the plate just before impact. If it is cut, the culprit is traditionally required both to repair the damage and ease the thirst of all the witnesses!

Where the source is a heavy weight dropped from a considerable height, a relay switch can be attached to its top surface but may not trigger if the drop is not absolutely straight. A crude but more reliable home-made device which can be attached to any dropping weight is shown in Figure



2.3.

Fig. 2.3: Weight-drop Contact Switch

On impact, the inertia of the bolt compresses the spring and contact is made with the upper surface of the weight.

Time-break pulses may be strong enough to produce interference on other channels (*cross-talk*). Trigger cables and circuits should therefore be kept well away from data lines.

4.0 CONCLUSION

It is possible (although not common) for a detonator to be triggered by currents induced by power lines or radio transmissions but this is less likely if the leads are twisted together. Triggering by static electricity is prevented if the circuit is closed. The shorted, twisted, ends of detonator leads should be parted only when the time comes to make the connection to the firing cable, which should itself be shorted at the far end. Explosives should not be handled at all in thunderstorms.

5.0 SUMMARY

Explosive charges need to be matched to the available holes. Large charges may be used in deep holes with little obvious effect at the surface, but a hole of less than 2 m deep will often blow out, scattering debris over a wide area. Only experience will allow safe distances to be estimated and even experienced users can make mistakes; safety helmets should be worn and physical shelter such as a wall, a truck or a large tree should be available. Heavy blasting mats can reduce blow-outs, but their useful lives tend to be short and it is unwise to rely on them alone.

A point where a shot has been fired but no crater has formed should be regarded with suspicion. The concealed cavity may later collapse under the weight of a person, animal or vehicle, leading to interesting litigation.

6.0 TUTOR-MARKED ASSIGNMENT

1. Write short notes on the following in relation to seismic work:
 - a. Hammer
 - b. Explosives
 - c. Safety
 - d. time Breaks
 - e. crater

7.0 REFERENCES/FURTHER READING

- William L. (2013). *Fundamentals of Geophysics* (2nd Edition). Cambridge University Press, p.121.
- John, M. (2003). *Field Geophysics*. (3rd ed.). England: John Wiley and Sons Ltd., p. 249.
- Reynolds, J. M. (1997). *An Introduction to Applied and Environmental Geophysics*. Chichester: Wiley, p. 796.
- Sharma, P. V. (1997). *Environmental and Engineering Geophysics*. Cambridge: Cambridge University Press, p. 475.
- Telford, W. M., Geldart, L. P., Sheriff, R. E. & Keys, D. A. (1990). *Applied Geophysics*. (2nd ed.). Cambridge: Cambridge University Press, p.770.

Video Link

UNIT3 DETECTION OF SEISMICWAVES

CONTENTS

- 1.0 Introduction
- 2.0 Objectives
- 3.0 Main Content
 - 3.1 Geophones
 - 3.2 Detection of S-Waves
 - 3.3 Detection in Swamps and Water
 - 3.4 Noise
 - 3.5 Seismic Cables
- 4.0 Conclusion
- 5.0 Summary
- 6.0 Tutor-Marked Assignment
- 7.0 References//Further Reading

1.0 INTRODUCTION

In this unit, the detection of seismic waves will be discussed. Land seismic detectors are known as *geophones*, marine detectors as *hydrophones*. Both convert mechanical energy into electrical signals. Geophones are usually positioned by pushing a spike screwed to the casing firmly into the ground but it may be necessary to unscrew the spike and use some form of adhesive pad or putty when working on bare rock.

2.0 OBJECTIVES

At the end of this unit, you should be able to:

- differentiate between geophones and hydrophones
- apply geophones on land and hydrophones on water
- state that geophones are referred to as seismometer or detectors.

3.0 MAINCONTENT

3.1 Geophones

A geophone consists of a coil wound on a high-permeability magnetic core and suspended by leaf springs in the field of a permanent magnet (Figure 3.1). If the coil moves relative to the magnet, voltages are induced and current will flow in any external circuit. The current is proportional to the velocity of the coil through the magnetic field, so that ground movements are recorded, not ground displacements. In most

cases, the coil is mounted so that it is free to vibrate vertically, since this gives the maximum sensitivity to P waves rising steeply from subsurface interfaces, i.e., to reflected and refracted (but not direct) P waves. P-wave geophones that have been normally connected give negative first-arrival pulses (*breaks*) for refractions and reflections, but may break either way for direct waves.

In reflection work using large offsets, or in refraction work where the velocity contrasts between overburden and deeper refractors are small, the rising wave fronts make relatively large angles with the ground surface and the discrimination by the geophones between S waves and P waves will be less good.

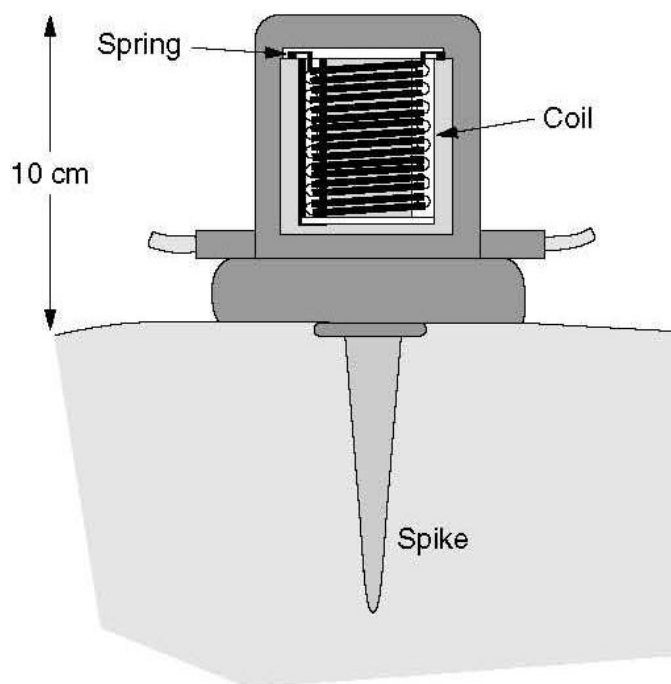


Fig. 3.1: Moving Coil Geophone

Geophone coils have resistances of the order of 400 ohms and damping is largely determined by the impedance of the circuits to which they are linked. The relative motion between coil and casing is also influenced by the natural vibration frequency of the suspended system. At frequencies above resonance, the response approximately replicates the ground motion but signals below the resonant frequency are heavily attenuated. Standard geophones usually resonate at or below 10 Hz, i.e. well below the frequencies useful in small-scale surveys. Response curves for a typical 10 Hz phone are shown in Figure 3.2.

Geophones are remarkably rugged, which is just as well considering the ways in which they are often treated. Even so, their useful lives will be reduced if they are dumped unceremoniously from trucks into tangled heaps on the ground. Frames can be bought or made to which they can be clipped for carrying (Figure 1.8) and these can be good investments, but only if actually used.

3.2 Detection of S-Waves

Although S-waves are regarded as noise in most seismic work, there are occasions when S-wave information is specifically sought. For example, both S- and P-wave velocities are required to determine elastic properties.

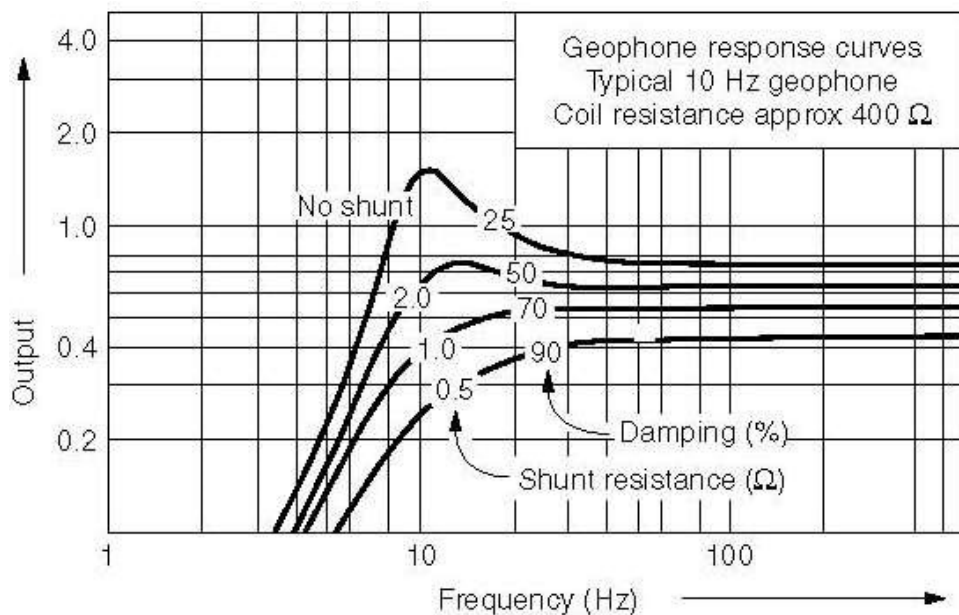


Fig.3.2: Frequency Response of a Typical Moving-coil Geophone

The degree of damping depends on the value of the shunt resistance connected in parallel with the geophone, and also on the input resistance of the recorder's 'No shunt' corresponds to infinite shunt resistance.



Fig. 3.3: Geophone Carrying Frame in Use, Papua New Guinea

“S-wave” geophones have coils that move horizontally rather than vertically, the assumption being that wave fronts of interest will be rising more or less vertically and the S-wave vibrations will therefore be in the plane of the ground surface. Because direct waves travel parallel to the ground surface, S-wave geophones are more sensitive to direct P waves than direct S waves, just as P-wave geophones are sensitive to vertically polarized direct S waves.

3.3 Detection in Swamps and Water

Normal geophones are rainproof rather than waterproof, and are connected to cables by open crocodile clips. Geophones are also available that are completely enclosed and sealed into waterproof cases, for use in swamps. These do not have external spikes but are shaped so that they can be easily pushed into mud.

Motion-sensitive instruments cannot be used in water. Piezo-electric hydrophones respond to variations in pressure rather than motion and are equally sensitive in all directions. Discrimination between P and S waves is not required since S waves cannot travel through fluids.

3.4 Noise

Any vibration that is not part of the signal is noise. Noise is inevitable and coherent noise is generated by the shot itself. S waves, Love and Rayleigh waves and reflections from surface irregularities are all forms of coherent noise. In shallow refraction work, this is slow and therefore late-arriving, waves usually prevent the use of any event other than the first arrival of energy.

Noise which is not generated by the shot is termed random. Movements of traffic, animals and people all generate random noise and can, to varying extents, be controlled. It should at least be possible to prevent the survey team contributing, by giving warning using a whistle or hooter. Random noise is also produced by vegetation moving in the wind and disturbing the ground. The effects can be reduced by citing geophones away from trees and bushes, and sometimes by clearing away smaller plants. Significant improvements can often be achieved by moving particularly noisy geophones a few inches. Placement is also important. It may not be easy to push a spike fully home in hard ground but a geophone an inch above the ground vibrates in the wind.

3.5 Seismic Cables

Seismic signals are carried from geophones to recorders as varying electric currents, in cables which must contain twice as many individual wires as there are geophones. Wires are necessarily packed very closely and not only can external current carriers such as power and telephone cables induce currents, but a very strong signal in one wire can be passed inductively to all the others.

Cross-talk can be particularly severe from the strong signals produced by geophones close to the shot point, and it may even be necessary to disconnect these to obtain good records on other channels.

The amount of cross-talk generally increases with the age of the cable, probably because of a gradual build-up of moisture inside the outer insulating cover. Eventually the cable has to be discarded. Cables and plugs are the most vulnerable parts of a seismic system and are most at risk where they join. It is worthwhile being very careful. Re-soldering wires to a plug with 24 or more connections is neither easy nor interesting. Most cables are double-ended, allowing either end to be connected to the receiver. If a wire is broken, only the connection to one end will be affected and the 'dead' channel may revive if the cable is reversed. All too often, however, other dead channels are discovered when this is done.

4.0 CONCLUSION

The geophones, sometimes referred to as seismometers or detectors, are the unit in direct contact with the earth that converts the motion of the earth resulting from the shot into electric signals. These signals constitute the inputs into an instrumentals system, the end product of which is the presentation of subsurface geological information in some viable form, usually as a record section, which, except for distortion of scale, is comparable to geologic cross section.

5.0 SUMMARY

Geophones are designed to react to motion of the earth in a given direction. Mechanical instruments record the amplified displacement of the ground; electromagnetic instruments respond to the velocity of ground motion. Depending on the designed, either type may respond to vertical or horizontal motion. Some modern electromagnetic instruments are constructed so as to record simultaneously three orthogonal components of motion. Most designs employ variations on the pendulum principle.

6.0 TUTOR-MARKED ASSIGNMENT

1. Define the following:
 - a. Seismometers
 - b. Hydrophones
 - c. Noise
2. Describe geophones with the aid of a simple diagram.
3. Differentiate between a geophones and hydrophones.
4. With examples, differentiate between coherent noise and random noise.

7.0 REFERENCES/FURTHER READING

- William L. (2013). *Fundamentals of Geophysics* (2nd Edition). Cambridge University Press, p.121.
- John, M. (2003). *Field Geophysics*. (3rd ed.). England: John Wiley and Sons Ltd., p. 249.
- Reynolds, J. M. (1997). *An Introduction to Applied and Environmental Geophysics*. Chichester: Wiley, p. 796.
- Sharma, P. V. (1997). *Environmental and Engineering Geophysics*. Cambridge: Cambridge University Press, p. 475.
- Telford, W. M., Geldart, L. P., Sheriff, R. E. & Keys, D. A. (1990). *Applied Geophysics*. (2nd ed.). Cambridge: Cambridge University Press, p.770.

Video Link

UNIT4 RECORDING SEISMIC SIGNALS

CONTENTS

- 1.0 Introduction
- 2.0 Objectives
- 3.0 Main Content
 - 3.1 Single-Channel Seismographs
 - 3.2 Multi-Channel Seismographs
- 4.0 Conclusion
- 5.0 Summary
- 6.0 Tutor-Marked Assignment
- 7.0 References//Further Reading

1.0 INTRODUCTION

Instruments that record seismic signals are known as *seismographs*. They range from timers which record only single events to complex units that digitize, filter and store signals from a number of detectors simultaneously.

2.0 OBJECTIVES

At the end of this unit, you should be able to:

- discuss simple seismic recorders
- explain seismographs
- describe common instruments used in seismic signals recording.

3.0 MAINCONTENT

3.1 Single-Channel Seismographs

Most single-channel seismographs have graphic displays, although rudimentary seismic “timers” which simply displayed the arrival time of the first significant energy pulse numerically were once popular. On a visual display, the time range is switch or key-pad selected and the left-hand edge of the screen defines the shot or impact instant. Hard copy is not usually obtainable and times are measured directly. In some models, a cursor can be moved across the screen while the time corresponding to its position is displayed. Noise levels can be monitored by observing the trace in the absence of a source pulse.

Modern single-channel instruments use enhancement principles. A digital version of the signal is stored in solid-state memory, as well as

being displayed on the screen. A second signal can either replace this or be added to it. Any number n of signals can be summed (stacked) in this way for a theoretical \sqrt{n} improvement in signal/noise ratio.

3.2 Multi-Channel Seismographs

Seismographs with 12 or 24 channels are generally used in shallow surveys, whereas a minimum of 48 channels is now the norm in deep reflection work.

With multiple channels, both refraction and reflection work can be done and explosives can reasonably be used since the cost per shot is less important when each shot produces many traces. Enhancement is used very widely and most instruments now provide graphic displays, optional hard copy and digital recording.

The enhancement seismographs now in use (Figure 4.1) are very sophisticated and versatile instruments. Display formats can be varied and individual traces can be selected for enhancement, replacement or preservation. Traces can be amplified after as well as before storage in memory, and time offsets can be used to display events that occur after long delay times. Digital recording has virtually eliminated the need for amplification before recording, because of the inherently very large *dynamic range* associated with storage of data as fixed precision numbers plus exponents (Example 1). Filters can also be applied, to reduce both high frequency random noise and also the long-period noise, of uncertain origin, that sometimes drives the traces from one or two geophones across the display, obscuring other traces.



Fig. 4.1: Enhancement Seismographs

The instrument on the right is the now obsolete knob and switch controlled Geometrics 1210F. The instrument on the left is one of its successors, the Smartseis, which is entirely menu-driven. Note the hard-copy record just emerging from the Smartseis, and the much greater size of the display “window”.

Example 1

Dynamic range is concerned with the range over which data can be recorded with roughly uniform percentage accuracies. When seismic amplitudes were recorded in “analogue” form on magnetic tape, in which magnetization was proportional to signal strength, the dynamic range was limited at low amplitudes by tape noise and at high amplitudes by magnetic saturation. Automatic gain control (AGC) was therefore applied before recording, and inevitably distorted the signals. In digital systems, data are recorded as numerical values plus *exponents*, which are the powers of some other number by which the numerical value must be multiplied.

Thus, the values: 46 789 and 0.0000046789 can be written in the familiar engineering notation, which uses powers of 10, as:

4.6789×10^4 and 4.6789×10^{-6}

The two quantities are thus recorded to the same percentage accuracy. In digital systems, data are usually recorded in binary formats and the exponent uses powers of 2. It is commonly allowed to range between -128 and $+127$, which is roughly equivalent to a range from 10^{-38} to 10^{+38} .

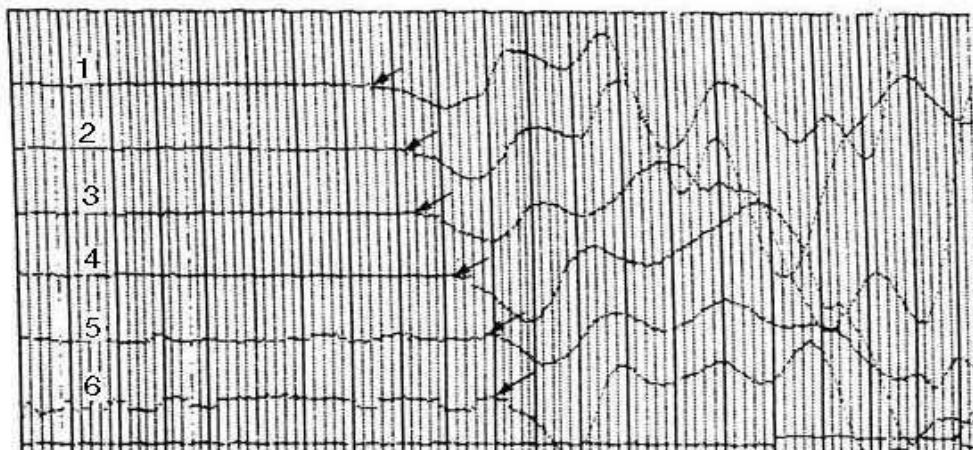


Fig.4.2: Six-channel Refraction Record Showing Refraction “Picks”

Noise prior to these picks is increasingly obvious as amplification is increased to record signals from the further geophones.

The refraction survey example in Figure 4.2 shows the signals recorded by six geophones at points successively further from the source, with the traces from distant geophones amplified more to compensate for attenuation. Inevitably, amplifying the signal also amplifies the noise. In the field, arrival times can be estimated from the screen but this is never easy and seldom convenient. On the other hand, hard copies produced directly from the instrument are often of rather poor quality. This is especially true of dot-matrix outputs, because the matrix size causes irregularities in what should be smooth curves (Figure 4.2).

Where these are the built-in printers, and assuming the instrument also has the capacity to store data digitally, it is worthwhile having a separate lap-top computer coupled to a reasonable printer at the field base. It would be foolhardy, however, not to produce, and preserve, the field hard copy.

Powerful microcomputers are incorporated into most modern instruments, with high-capacity hard drives for data storage. Bewildering numbers of acquisition and processing options are available via menu-driven software. So versatile are these instruments that it is sometimes difficult, or at least time consuming, to persuade them to carry out routine, straightforward survey work.

4.0 CONCLUSION

Seismographs that allow signals to be displayed and summed are obviously superior to mere timers, and can be used to study events other than first arrivals. However, they are generally only useful in shallow refraction work since it is difficult to distinguish between direct waves, refractions and reflections on a single trace. Hammer sources are universal, since it would be expensive and inefficient to use an explosive charge to obtain such a small amount of data.

5.0 SUMMARY

The seismograph is the earliest known instrument for indicating the arrival of seismic tremor from a distant source is reputed to have been invented by a Chinese astronomer called Chang Heng in 13AD. The device consisted of eight invented dragons placed at equal intervals around the rim of vase. Under each dragon is an open-mouthed metal toad. Each dragon held a bronze ball in its mouth. When a slight tremor shook the device, an internal mechanism opened the mouth of one dragon, releasing its bronze balls, which fell into the open mouth of the metal toad beneath, thereby marking the direction of arrival of the tremor. The principle of this instrument was used in the 18th century European devices that consist of brimful bowl or mercury with grooved

rims under which tiny collector bowls were placed to collect the overflow occasioned by a seismic tremor. These instruments gave viable evidence of a seismic event but were unable to trace a permanent record of the seismic wave itself. They are classified as seismoscopes.

6.0 TUTOR-MARKED ASSIGNMENT

1. What are seismographs?
2. List and explain the different types of seismographs you have learnt in this unit.

7.0 REFERENCES/FURTHER READING

William L. (2013). *Fundamentals of Geophysics* (2nd Edition). Cambridge University Press, p.121.

John, M. (2003). *Field Geophysics*. (3rd ed.). England: John Wiley and Sons Ltd., p. 249.

Reynolds, J. M. (1997). *An Introduction to Applied and Environmental Geophysics*. Chichester: Wiley, p. 796.

Sharma, P. V. (1997). *Environmental and Engineering Geophysics*. Cambridge: Cambridge University Press, p. 475.

Telford, W. M., Geldart, L. P., Sheriff, R. E. & Keys, D. A. (1990). *Applied Geophysics*. (2nd ed.). Cambridge: Cambridge University Press, p.770.

Video Link

MODULE 2

Unit1	Seismic Reflection
Unit2	Reflection Surveys

UNIT 1 SEISMICREFLECTION**CONTENTS**

- 1.0 Introduction.
- 2.0 Objectives
- 3.0 Main Content
 - 3.1 Reflection Theory
 - 3.1.1 Reflection Coefficients and Acoustic Impedances
 - 3.2 Normal Move-Out
 - 3.3 Dix Velocity
 - 3.4 Effect of Dip
 - 3.5 Multiple Reflections
- 4.0 Conclusion
- 5.0 Summary
- 6.0 Tutor-Marked Assignment
- 7.0 References/Further Reading

1.0 INTRODUCTION

The seismic reflection method absorbs more than 90% of the money spent world-wide on applied geophysics. Most surveys are aimed at defining oil bearing structures at depths of thousands of metres using hundreds or even thousands of detectors. However, some reflection work is done by small field crews probing to depths of, at most, a few hundred metres. The instruments used in these surveys were originally very simple but may now have as much in-built processing power as the massive processing laboratories of 20 years ago. Field operators need to have some understanding of the theory behind the options available.

2.0 OBJECTIVES

At the end of this unit, you should be able to:

- give a descriptive treatment of the more important aspects, concentrating on the developing fundamental understanding of these methods and the physical principles on which they are based
- describe the instruments used in this seismic survey

- discuss of the theory behind seismic reflection.

3.0 MAINCONTENT

3.1 Reflection Theory

Ray-path diagrams, as previously used, provide useful insights into the timing of reflection events but given no indication of amplitudes.

3.1.1 Reflection Coefficients and Acoustic Impedances

The acoustic impedance of a rock, usually denoted by I , is equal to its density multiplied by the seismic P-wave velocity. If a seismic wave front strikes a planar interface between two rock layers with impedances I_1 and I_2 at right angles (normal incidence), the amplitude of the reflected wave, as a percentage of the amplitude of the incident wave (the reflection coefficient, RC) is given by:

$$RC = (I_2 - I_1) / (I_2 + I_1)$$

If I_1 is greater than I_2 , the coefficient is negative and the wave is reflected with phase reversed, i.e., a negative pulse will be returned where a positive pulse was transmitted and vice versa. The amount of energy reflected first decreases and then increases as the angle of incidence increases. If the velocity is greater in the second medium than in the first, there is ultimately total reflection and no transmitted wave. However, most small-scale surveys use waves reflected at nearly normal incidence.

3.2 Normal Move-Out

The true normal-incidence ray cannot be used in survey work, since a detector at the shot point would probably be damaged and would certainly be set into such violent oscillation that the whole record would be unusable.

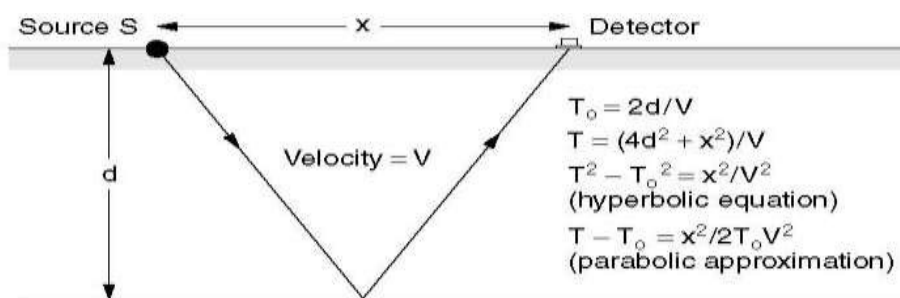


Fig.1.1: Derivation of the Normal move-out Equation for a Horizontal Reflector (T_o is the normal incidence time)

Geophones are therefore offset from sources and geometric corrections must be made to travel times.

Figure 1.1 shows reflection from a horizontal interface, depth d , to a geophone at a distance x from the source. The exact hyperbolic equation linking the travel time T and the normal incidence time T_o is established by application of the Pythagoras theorem. For small offsets, the exact equation can be replaced by the parabolic approximation, which gives the normal move out (NMO), $T - T_o$, directly as a function of velocity, reflection time and offset.

$$T - T_o = x^2/2T_oV^2$$

Since V usually increases with depth and T_o always does, NMO decreases (i.e., NMO curves flatten) with depth. Curved alignments of reflection events can be seen on many multi-channel records (Figure 1.1). Curvature is the most reliable way of distinguishing shallow reflections from refractions.

3.3 Dix Velocity

If there are several different layers above a reflector, the NMO equation will give the 'root-mean-square' (RMS) velocity defined as:

$$V_{RMS}^2 = (V_1^2 t_1 + V_2^2 t_2 + \dots + V_n^2 t_n) / T_n$$

where t_n is the transit time through the n^{th} layer, velocity V_n , and T_n is the total transit time to the base of the n^{th} layer. Interval velocities can be calculated from RMS velocities using the *Dix formula*:

$$V_{DIX}^2 = (V_{n-1}^2 T_{n-1} - V_n^2 T_n) / (T_{n-1} - T_n)$$

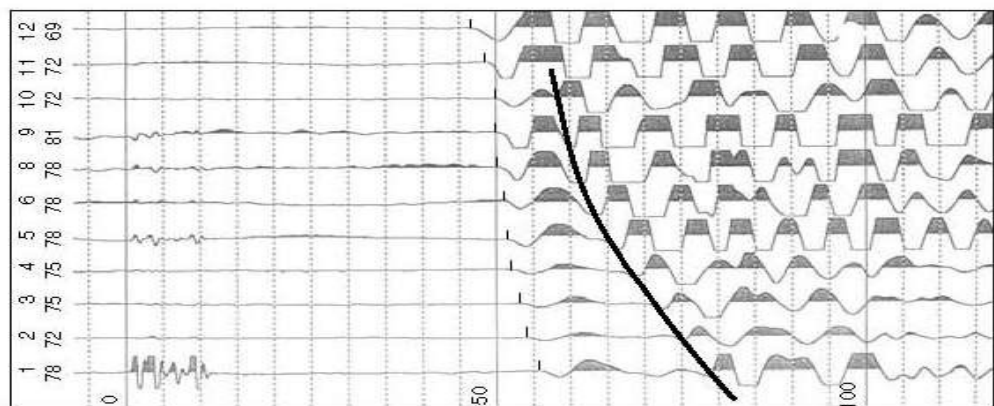


Fig.1.2: Enhancement Seismograph Record showing Curved Alignment of Reflections (the thickline)

The earlier events were produced by refractions. Note that on Channels 11 and 12 the strong refracted wave completely overwrites the reflection. The variable area presentation used is popular for reflection work since it emphasizes trace-to-trace correlations, although some information is lost where traces overlap.

The subscripts $n - 1$ and n denote, respectively, the top and bottom of the n th layer. RMS velocities are normally slightly higher than true average velocities, since squaring the high velocities increases their influence on the average. Significant errors can arise if RMS velocities are used directly to make depth estimates but these are generally less than the errors introduced by the use of the NMO equation to estimate velocity using reflections from interfaces that may well not be horizontal. Dix conversion may not help very much in these cases.

3.4 Effect of Dip

If the source is placed at the center of the geophone spread, the curves obtained over horizontal interfaces will be symmetrical about the source point. If, however, the reflector has a uniform dip α , the reduction in travel path on the up-dip side of the shot compensates to some extent for the offset, and some travel times will be less than the normal-incidence time (Figure 2.3).

The minimum time $2d \cdot \cos(\alpha)/V$ is recorded at a distance $2d \cdot \sin(\alpha)$ from the shot, on the up-dip side. The reflected ray rises vertically to this point, about which the move-out curve is symmetrical. Dip effects in shallow reflection surveys are detectable only for very large dips or very long spreads.

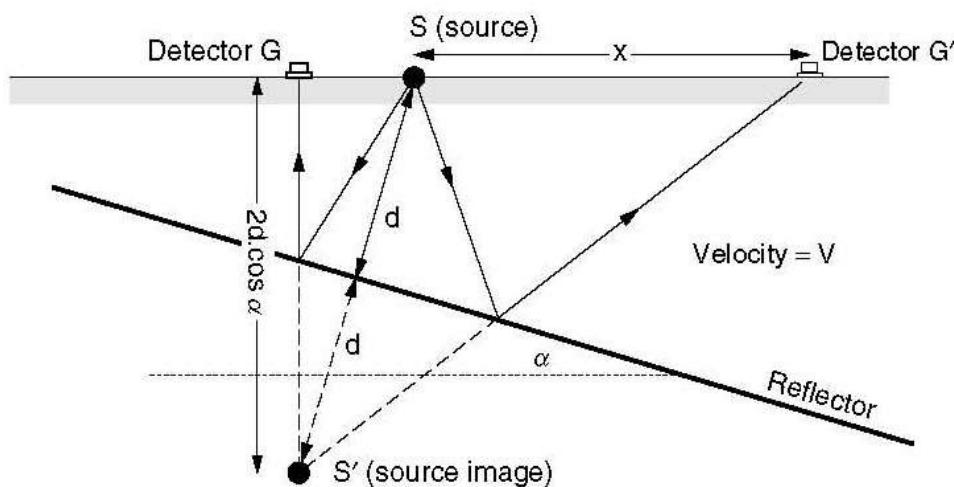


Fig. 1.3: Effect of Dip on a Single-fold Record

Rays are reflected from the dipping interface as if derived from the image point S_* at depth $2d \cdot \cos \alpha$ below the surface, where d is the perpendicular distance from the shot-point to the interface. The normal incidence travel time is $2d/V$ but the shortest travel time is for the ray which is vertical after reflection. An identical move-out hyperbola would be produced by a shot at point G and a horizontal interface at depth $d \cdot \cos \alpha$.

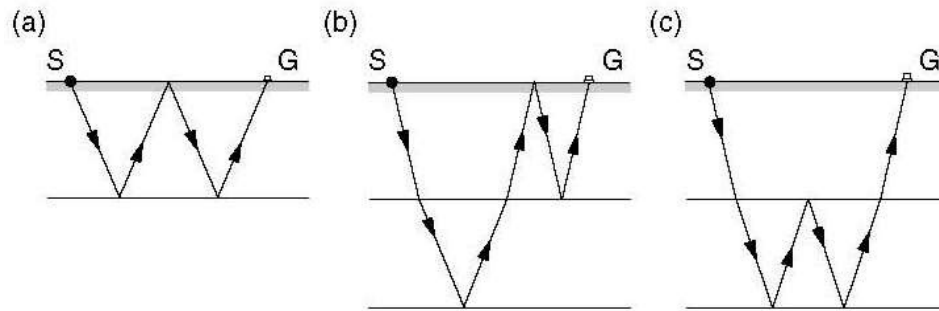


Fig.1.4: Paths for Multiple Reflections: (a) Simple Multiple (b) Peg-leg (c) Intra-formational Multiple

3.5 Multiple Reflections

A wave reflected upwards with high amplitude from a subsurface interface can be reflected down again from the ground surface and then back from the same interface. This is a simple multiple. Two strong reflectors can generate *peg-leg* and *intraformational* multiples (Figure 1.4). Multiples are difficult to identify with certainty on single traces. They can sometimes be recognized on multi-channel records because they have move-outs appropriate to shallow reflectors and simple time relationships with their primaries.

4.0 CONCLUSION

Seismic reflection method is by far the most widely used geophysical technique - the structure of the subsurface formations is mapped by measuring the times required for a seismic wave (or pulse), generated in the earth by a near-surface explosion, mechanical impact, or vibration, to return to the surface after reflection from interfaces between formations having different physical properties. The reflections are recorded by detecting instruments responsive to ground motion. They are laid along the ground at distances from the point of generation, which are generally small compared with the depth of the reflector. Variations in the reflection times from place to place on the surface usually indicate structural features in the strata below. Depth to reflecting interfaces can be estimated from the recorded times and

velocity information that can be obtained either from the reflected signals themselves or from surveys in wells. Reflections from depths of 30, 000 ft or more can normally be observed by combining the reflections from the repeated source applications, so in most areas, geologic structure can be determined throughout the sedimentary section.

5.0 SUMMARY

Reflection data can be used to determine the average velocities of seismic waves between the surface and the reflector. More important from a geological viewpoint, the velocities of seismic waves through depth intervals of a few percent of depth from the surface can now be obtained and often provide a good indication of lithology. The usefulness of such information depends on the layering as well as on the problem at hand.

With reflection methods, one can locate and map such features as anticlines, faults, salt domes, and reef. Many of these are associated with the accumulation of oil and gas. Major convergences caused by depositional thinning can be detected from reflection sections. The resolution of the method is now approaching a fineness that is adequate for finding stratigraphic traps such as pinch outs or faces changes. However, successful exploration for stratigraphic oil accumulations by reflection techniques requires skillful coordination of geological and seismic information.

6.0 TUTOR-MARKED ASSIGNMENT

1. What is seismic reflection?
2. What do you understand by the term *acoustic impedance of a rock*?
3. Explain with the aid of diagram the following:
 - a. Multiple reflection
 - b. Simple multiple
 - c. Peg leg
 - d. Intra formational multiples
4. State the dix formular and define all the parameters and variable.
5. What is normal move-out? Derive a move-out equation for a horizontal reflector.

7.0 REFERENCES/FURTHERREADING

William L. (2013). *Fundamentals of Geophysics* (2nd Edition).
Cambridge University Press, p.121.

John, M. (2003). *Field Geophysics*. (3rd ed.). England: John Wiley and
Sons Ltd., p. 249.

Reynolds, J. M. (1997). *An Introduction to Applied and Environmental
Geophysics*. Chichester: Wiley, p. 796.

Sharma, P. V. (1997). *Environmental and Engineering Geophysics*.
Cambridge: Cambridge University Press, p. 475.

Telford, W. M., Geldart, L. P., Sheriff, R. E. & Keys, D. A. (1990).
Applied Geophysics. (2nd ed.). Cambridge: Cambridge
University Press, p.770.

Video Link

UNIT 2 REFLECTIONSURVEYS

CONTENTS

- 1.0 Introduction
- 2.0 Objectives
- 3.0 Main Content
 - 3.1 Spread Lengths
 - 3.2 Arrays
 - 3.3 Shot Arrays
 - 3.4 Common Mid-Point Shooting
 - 3.5 Depth Conversion
 - 3.6 Geometric Distortion
- 4.0 Conclusion
- 5.0 Summary
- 6.0 Tutor-Marked Assignment
- 7.0 References/Further Reading

4.0 INTRODUCTION

Reflected waves are never first arrivals, so clear-cut reflection events are seldom seen. Oil industry techniques for improving signal-to-noise ratios can be used for shallow work and simple versions of the programs used are incorporated in the software supplied with the latest generation of 12- and 24-channel seismographs.

2.0 OBJECTIVES

At the end of this unit, you should be able to:

- give a descriptive treatment of the more important aspects, concentrating on the developing fundamental of reflection surveys
- explain that reflection survey techniques are therefore widely used in oil industry for exploring oil.

3.0 MAINCONTENT

3.1 Spread Lengths

The distance from the source to the nearest geophone in a shallow reflection survey is usually dictated by the strength of the source (and the need to protect the geophone) and may be as little as 2 m when a hammer is being used. Even with explosives or heavy weight drops, minimum offsets of more than about 10 m are unusual when observing

shallow reflections. A reflection spread can be much shorter than a refraction spread used to probe to similar depths, but with powerful sources and multi-channel recording, the furthest geophone may be more than 100 m from the source. The optimum spread length can be determined only by experiment, since the most important factors are the arrival times of the noise trains associated with the direct wave and any strong refracted waves. Field work should begin with tests specifically designed to examine these arrivals, generally by using elongated spreads.

3.2 Arrays

Ideally, reflected energy should arrive after the near-surface waves (ground-roll and refractions) have passed but this may not be possible if the depth of investigation is very small. In such cases, geophones may be connected in arrays to each recording channel. Reflected waves, which travel almost vertically, will reach all the geophones in an array almost simultaneously but the direct waves will arrive at different times and produce signals that can interfere destructively.

The efficiency with which a wave is attenuated by an array is defined by its *relative effect* (RE) compared to the effect of the same number of geophones placed together at the array centre. The variation of the RE with *apparent wavelength* (which for the direct wave is equal to the true wavelength), for a linear array of five geophones equally spaced on a line directed towards the shot point, is shown in Figure 2.1. Non-linear arrays produce more complex curves.

Simple arrays are preferred in the field, since mistakes are easily made in setting out complicated ones. The range of frequencies over which attenuation of the direct wave occurs is proportional to array length and it may be necessary to overlap the geophones in adjacent arrays. It would be unusual in a shallow survey to use more than five geophones per array.

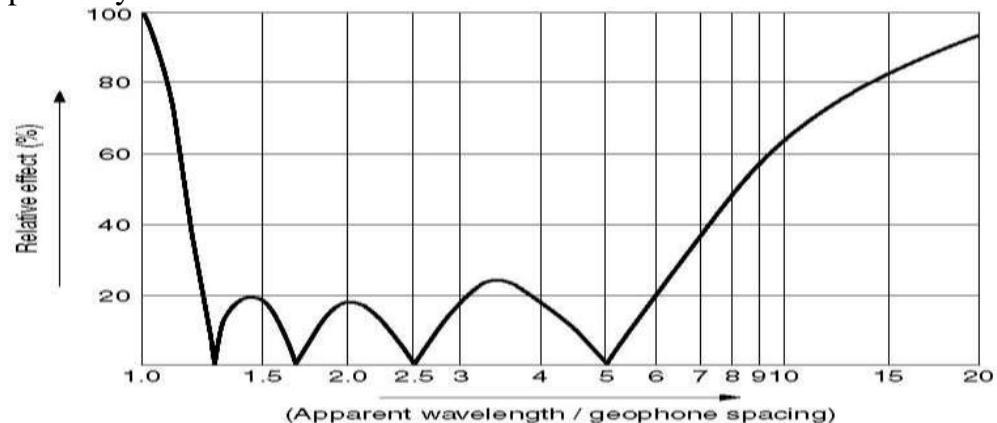


Fig.2.1: Relative Effect (RE) of an Array of five equi-spaced in-line Geophones

The 100% level would be attained with zero spacing between the geophones. The apparent wavelength is equal to the actual wavelength divided by the sine of the angle between the wavefront and the ground surface, and is infinite for a wave rising vertically and equal to the true wavelength for the direct wave. Attenuation is concentrated between values of apparent wavelength divided by geophone spacing of about 1.2 and 7. With 2 m spacing, a 500 m·s⁻¹ wave would be attenuated at frequencies of between about 35 and 200 Hz.

3.3 Shot Arrays

Seismic cables for use with only 12 or 24 channels are not designed with arrays in mind, and non-standard connectors may have to be fabricated to link the geophones to each other and to the cable. It may be easier to use arrays of shots instead.

A shot array using explosives usually involves simultaneous detonation of charges laid out in a pattern resembling that of a conventional geophone array. If an impact source is used with an enhancement instrument, the same effect can be obtained by adding together results obtained with the impact at different points. This is the simplest way of reducing the effects of surface waves when using a hammer.

3.4 Common Mid-Point Shooting

Improving signal-to-noise ratios by adding together several traces (stacking) is fundamental to deep reflection surveys. In shallow surveys, this technique is normally used only to stack (enhance) results obtained with identical source and detector positions. If, however, the data are recorded digitally, NMO corrections can be made (although not in the field) to traces produced with different source–receiver combinations. The technique normally used is to collect together a number of traces that have the same mid-point between source and receiver (common midpoint or CMP traces), apply the corrections and then stack.

The number of traces gathered together in a CMP stack defines the *fold* of coverage. Three traces forming a single synthetic zero-offset trace constitute a 3-fold stack and are said to provide 300% cover. The maximum fold obtainable, unless the shot point and geophone line are moved together by fractions of a geophone interval, is equal to half the number of data channels.

Figure 2.2 shows the successive geophone and source positions when a six-channel instrument is used to obtain 300% cover. Special cables and switching circuits are available for use in deep reflection surveys, but CMP fieldwork with the instruments used for shallow surveys is very slow and laborious. The need to combine traces from several different

shots makes it difficult to do CMP processing in the field.

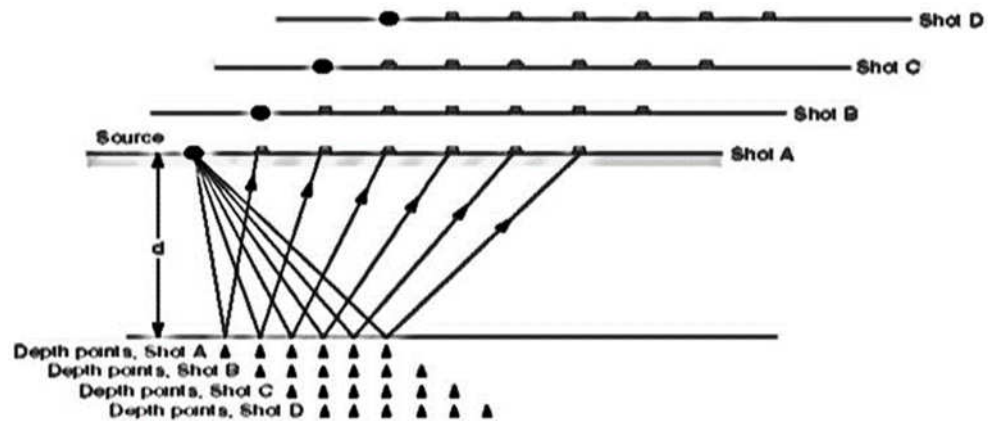


Fig.2.2: CMP Schematic, for 3-fold Cover with a 6-channel System

Shot points A, B, C and D are progressively one geophone group interval further to the right. Note that the distance between reflection points (depth points) on the interface is only half that between geophone groups on the surface. Shots A and D have no depth points in common.

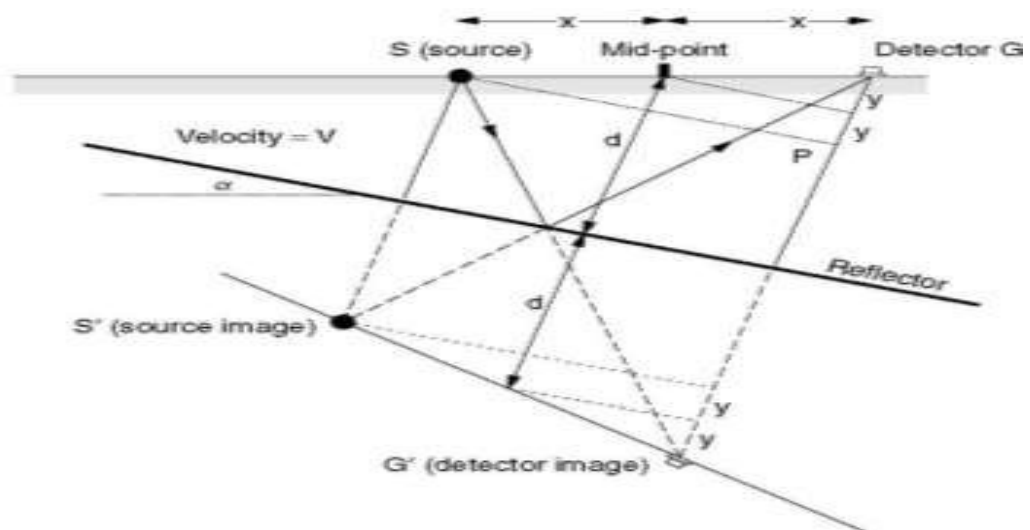


Fig. 2.3: Effect of Dip in CMP Shooting

In contrast to single-fold shooting, the shot points as well as the geophone locations are different for the different traces. Shot points and detector locations are equivalent and the 'depth point' on the reflector moves up dip as the offset increases. The move-out equation is most easily derived by noting that the path from source to detect or isequalin

length to the path SG' from the source to the detector 'image point', and that the geometric relationships between similar triangles imply the equality of all the length smarked 'y'. The Pythagoras relationship can

be applied to the triangle SG^1P , and the times can be obtained by dividing the distances by V .

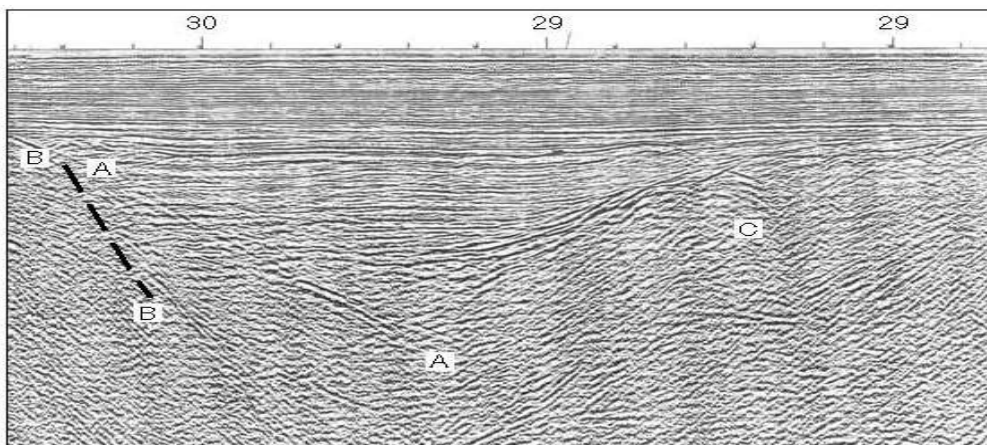
Thus,

$$T_0 = 2d/V \text{ and } T = SG^1/V$$

The geometry of a CMP shoot differs from that for single-fold coverage, and the effect of dip is therefore different (Figure 2.3). If the interface dips at an angle α , the velocity deduced from a CMP stack is equal to $V/\cos \alpha$ and the 'depth' is equal to the length of the normal incidence ray from the common mid-point to the interface. In contrast to the single-fold gather of Section 2.1.4, the minimum time is associated with the normal incidence ray. The aim of stacking is to produce a noise-reduced seismic trace that approximates to the normal incidence trace, i.e. to the trace that would have been produced had the source and detector been coincident. The initials CMP replaced an earlier acronym, CDP (common depth point) used for the same method. Referring to depth points (reflection points) as 'common' implies that all the reflections in a gather have come from the same point on the subsurface interface, which is true only for horizontal interfaces.

3.5 Depth Conversion

Reflection events are recorded not in depth but in two-way time (TWT). Velocities are needed to convert times into depths, but the Dix velocities (Section 2.1.3) obtained from NMO curves may be 10–20% in error, even for horizontal reflectors. Interpretations should be calibrated against borehole data wherever possible, and field crews should always be on the lookout for opportunities to measure vertical velocities directly.



The image is of a small graben structure beneath an unconformity. The position of the true fault plane BB (indicated by the dashed line) can be estimated from the positions of the terminations of the sub-horizontal reflectors representing the sediment fill within the graben (although care must be exercised because many of the deeper sub-horizontal events are multiples). The event AA is the seismic image of BB. It is displaced because the techniques used to display the data assume that reflections are generated from points vertically beneath the surface points, whereas they are actually generated by normal-incidence rays that are inclined to the vertical if reflected from dipping interfaces. The reflections from the fault and the opposite side of the graben cross over near the lower symbol ‘A’, forming a ‘bow-tie’. Convex-upward reflections near point C are diffraction patterns generated by faulting.

3.6 Geometric Distortion

Seismic reflection data are normally presented as sections prepared by playing out, next to each other and vertically down the sheet of paper, the traces from adjacent CMP gathers. Such sections are subject to geometric distortion. Artefacts such as displaced reflectors, diffraction patterns and ‘bow-ties’, described in Section 3.2 as affecting radar sections, also appear on seismic imagery, as is shown in Figure 2.4. Refraction surveys are widely used to study the water table and, for engineering purposes, the poorly consolidated layers near the ground surface, and also in determining near-surface corrections for deep reflection traces. Travel times are usually only a few tens of milliseconds and there is little separation between arrivals of different types of waves or of waves that have travelled by different paths. Only the first arrivals, which are always of a P wave, can be ‘picked’ with any confidence.

4.0 CONCLUSION

In recent years, reflection data have also been used for identifying lithology, generally from velocity and attenuation characteristics of the transmitted and reflected seismic waves, and for detecting hydrocarbons, primarily gas, directly on the basis of reflection amplitudes and other seismic indicators.

The reflection method comes closer than any other prospecting technique to providing a structural picture of the subsurface comparable to what could be obtained from a great number of boreholes in close proximity. Modern reflection record sections are similar in appearance to geologic cross sections, and geologists must sometimes be cautioned not to use them as such without taking into consideration some potential hazards that might lead to erroneous interpretation, even with good-

quality reflection data. Under ideal conditions, structural relief can be determined with a precision of about 0.5% of depth below the surface. This method makes it possible to produce structural maps of any geologic horizons that yield reflections, but the horizons themselves usually cannot be identified without independent geological information such as might be obtained from wells.

This method makes it possible to produce structural maps of any geologic horizons that yield reflections, but the horizons themselves usually cannot be identified without independent geological information such as might be obtained from wells.

5.0 SUMMARY

While current technological improvements have made it possible to obtain usable reflection data in many areas where reflections were formerly too poor to map, there are still places where reflection does not yield reliable information even though highly sophisticated data acquisition and processing techniques are used. In such intractable areas, other geophysical and geological methods must be employed

6.0 TUTOR-MARKED ASSIGNMENT

1. Explain the following terminologies:
 - a. Reflection survey
 - b. Geometric distortion in relation to reflection survey.
2. Write short notes on the following in relation to reflection
 - a. Spread length
 - b. CMS - Common mid-point shooting
 - c. Array
 - d. Depth Conversion

7.0 REFERENCES/FURTHER READING

- William L. (2013). *Fundamentals of Geophysics* (2nd Edition). Cambridge University Press, p.121.
- John, M. (2003). *Field Geophysics*. (3rd ed.). England: John Wiley and Sons Ltd., p. 249.
- Reynolds, J. M. (1997). *An Introduction to Applied and Environmental Geophysics*. Chichester: Wiley, p. 796.
- Sharma, P. V. (1997). *Environmental and Engineering Geophysics*. Cambridge: Cambridge University Press, p. 475.

Telford, W. M., Geldart, L. P., Sheriff, R. E. & Keys, D. A. (1990).
Applied Geophysics. (2nd ed.). Cambridge: Cambridge
University Press, p.770.

Video Link

MODULE 3

Unit1	Seismic Refraction
Unit2	Field Interpretation
Unit3	Limitation of Refraction Methods

UNIT1 SEISMICREFRACTION

CONTENTS

- 1.0 Introduction.
- 2.0 Objectives
- 3.0 Main Content
 - 3.1 Refraction Surveys
 - 3.1.1 The Principal Refractors
 - 3.1.2 Critical Refraction and the Head Wave
Snell's Law
 - 3.1.3 Lengths of Refraction Spreads
 - 3.1.4 Positioning Shots
 - 3.1.5 Centre Shots
 - 3.1.6 Annotation of Field Records
 - 3.1.7 Picking Refraction Arrivals
 - 3.1.8 Time–Distance Plots
- 4.0 Conclusion
- 5.0 Summary
- 6.0 Tutor-Marked Assignment
- 7.0 References/Further Reading

1.0 INTRODUCTION

Large primary voltages are needed to produce measurable IP effects. Current electrodes can be plain metal stakes but non-polarizing electrodes must be used to detect the few millivolts of transient signal.

2.0 OBJECTIVES

At the end of this unit, you should be able to:

- discuss the importance of power source in seismic refraction
- state the important fundamentals in refraction seismic refraction.

3.0 MAINCONTENT

3.1 Refraction Surveys

Ideally the interfaces studied in a small refraction survey should be shallow, roughly planar and dip at less than 15° . Velocity must increase with depth at each interface. The first arrivals at the surface will then come from successively deeper interfaces as distance from the shot point increases.

3.1.1 The Principal Refractors

P-wave velocities for common rocks were shown in Figure 1.1. In shallow refraction work, it is often sufficient to consider the ground in terms of dry overburden, wet overburden and weathered and fresh bedrock. It is very difficult to deal with more than three interfaces. The P-wave velocity of dry overburden is sometimes as low as 350 ms^{-1} , the velocity of sound in air, and is seldom more than 800 ms^{-1} . There is usually a slow increase with depth, which is almost impossible to measure, followed by an abrupt increase to $1500\text{--}1800 \text{ ms}^{-1}$ at the water table. Fresh bedrock generally has a P-wave velocity of more than 2500 ms^{-1} but is likely to be overlain by a transitional weathered layer where the velocity, which may initially be less than 2000 ms^{-1} , usually increases steadily with depth and the accompanying reduction in weathering.

3.1.2 Critical Refraction and the Head Wave Snell's Law

This implies that if, in Figure 1.1, V_2 is greater than V_1 and if $\sin i = V_1/V_2$, the refracted ray will travel parallel to the interface at velocity V_2 . This is critical refraction. After critical refraction, some energy will return to the ground surface as a *head wave* represented by rays which leave the interface at the critical angle. The head wave travels through the upper layer at velocity V_1 but, because of its inclination, appears to move across the ground at the V_2 velocity with which the wave-front expands below the interface. It will therefore eventually overtake the direct wave, despite the longer travel path. The *cross-over* or *critical* distance for which the travel times of the direct and refracted waves are equal is:

$$x_c = 2d [(V_2 + V_1)/(V_2 - V_1)]$$

This equation forms the basis of a simple method of refraction interpretation.

x_c is always more than double the interface depth and is large if the depth is large or the difference in velocities is small. The *critical time*, obtained by dividing the critical distance by the direct-wave velocity, is also sometimes used.

The term “critical distance” is also sometimes used for the minimum distance at which refractions return to the surface, i.e., the distance from the shot point at which energy arrives after reflection at the critical angle. This usage is not common amongst field crews since the refractions arrive after the direct wave at this point, and for some distance beyond, and are difficult to observe. If more than one interface is involved, the ray that is critically refracted at the lowermost interface leaves the ground surface at an angle i_n given by:

$$\sin i_n = V_1/V_n$$

Thus, the angle at which energy leaves the ground surface for ultimate critical refraction at a deep interface depends only on the velocities in the uppermost and lowermost layers involved, and not on the velocities in-between. Even though this is a surprisingly simple result, cross-over interpretation becomes rather complicated for multiple layers and the intercept-time method discussed below (Section 3.2) is generally preferred.

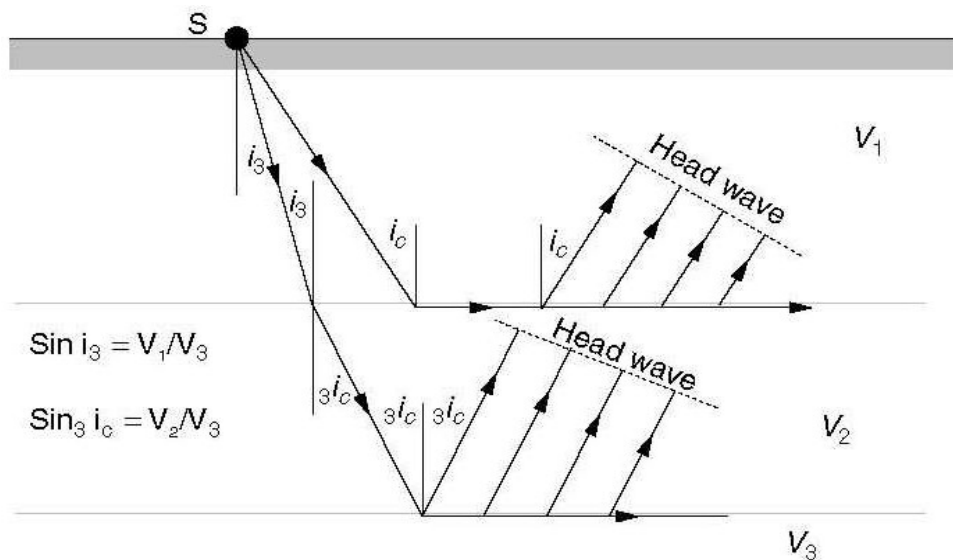


Fig. 1.1: Critical Refraction at Two Interfaces: $\sin i_c = V_1/V_2$

3.1.3 Lengths of Refraction Spreads

A line of geophones laid out for a refraction survey is known as a *spread*, the term *array* being reserved for geophones feeding a single recording channel. Arrays are common in reflection work but are almost unknown in refraction surveys where the sharpest possible arrivals are needed. Sufficient information on the direct wave and reasonable coverage of the refractor is obtained if the length of the spread is about three times the crossover distance. A simple but often inaccurate rule of thumb states that the spread length should be eight times the expected refractor depth.

3.1.4 Positioning Shots

In most refraction surveys, *short shots* are fired very close to the ends of the spread. Interpretation is simplified if these shots are actually at the end geophone positions so that travel times between shot points are recorded directly. If this system is used, the geophone normally at the short shot location should be moved half-way towards the next in line before the shot is actually fired (and replaced afterwards). Damage to the geophone is avoided and some extra information is obtained on the direct wave. *Long shots* are placed sufficiently far from the spread for all first arrivals to have come via the refractor, and short-shot data may therefore be needed before long-shot offsets can be decided. Distances to long shots need be measured accurately only if continuous coverage is being obtained and the long-shot to one spread is to be in the same place as a short or centre shot to another. If explosives are being used, it may be worthwhile using a very long offset if this will allow firing in water (see Section 1.2.1).

3.1.5 Centre Shots

The information provided by a conventional four-shot pattern may be supplemented by a centre shot. Centre shots are especially useful if there are considerable differences in interpretation at opposite ends of the spread, and especially if these seem to imply different numbers of refractors. They may make it possible to obtain a more reliable estimate of the velocity along an intermediate refractor or to monitor the thinning of an intermediate layer that is hidden, at one end of the spread, by refractions from greater depths. An additional reliable depth estimate is obtained that does not depend on assumptions about the ways in which the thicknesses of the various layers vary along the spread, and there will be extra data on the direct wave velocity. Centre shots are used less than they deserve. The extra effort is generally trivial compared to the work done in laying out the spread, and the additional and possibly vital information is cheaply obtained.

3.1.6 Annotation of Field Records

Hard-copy records can be (and should be) produced in the field from most of the seismographs now used for shallow refraction surveys. The several dozen records produced in a day's work that includes repeats, checks and tests as well as the completion of a number of different spreads must be carefully annotated if confusion is to be avoided. Annotations should obviously include the date and the name of the observer-in-charge, along with the survey location and spread number. Orientation should be noted, and the position of Geophone 1 should be defined. Unless the geophone spacing is absolutely uniform, a sketch showing shot and geophone locations should be added. If the interval between timing lines on the records can be varied and/or variable time offsets can be applied, these settings must also be noted. In many cases this is now done automatically.

Other items are optional. Amplifier gains and filter settings are not often recorded but such information may be useful. The number of shots or impacts combined in a single record can also be important with enhancement instruments.

And, of course, features such as the use of S-wave geophones at some points or peculiarities in the locations of some of the geophones should always be noted. Many of the items listed above can be printed directly on to the hard-copy record, provided they are first entered into the machine. This is often a more tedious, and more error-prone, process than simply writing the information on each record by hand.

3.1.7 Picking Refraction Arrivals

Picking first arrivals on refraction records relies on subjective estimates of first break positions (Figure 1.2) and may be difficult at remote geophones where the signal-to-noise ratio is poor. Some of the later peaks and troughs in the same wave train are likely to be stronger, and it is sometimes possible to work back from these to estimate the position of the first break. However, because high frequencies are selectively absorbed in the ground, the distance between the first break and any later peak gradually increases with increasing distance from the source. Furthermore, the trace beyond the first break is affected by many other arrivals as well as by later parts of the primary wave train, and these will modify peak and trough locations. Using later features to estimate first-arrival times should always be regarded as a poor substitute for direct picking.

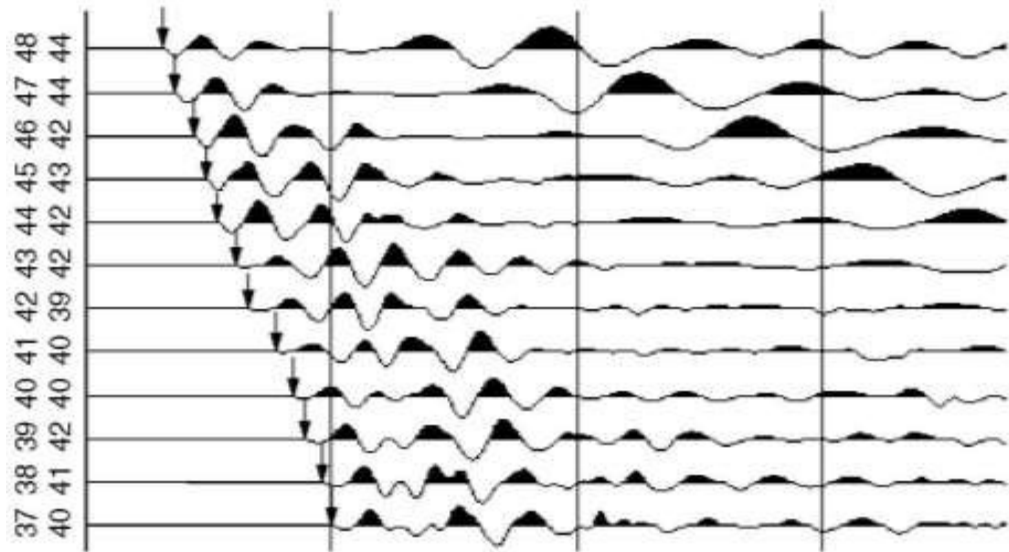


Fig.1.2: Portion of a Multi-channel Refraction Record, with first-break “picks” Identified by arrows

These become more difficult to make as signal to-noise ratio worsens. This record would be considered good, and much more difficult decisions usually have to be made.

3.1.8 Time–Distance Plots

The data extracted from a refraction survey consist of sets of times (usually first-arrival times) measured at geophones at various distances from the source positions. Since these are plotted against vertical time axes and horizontal distance axes, the gradient of any line is equal to the reciprocal of a velocity, i.e., steep slopes correspond to slow velocities. All the data for a spread are plotted on a single sheet that has a working area covering only the ground where there are actually geophones. It is not necessary to show the long-shot positions. Since as many as five sets of arrivals may have to be plotted, as well as a set of time differences, different colours or symbols are needed to distinguish between data sets. If the arrival times lie on a number of clearly defined straight-line segments, best-fit lines may be drawn. These are not actually necessary if the intercept-time interpretation method described below is used, and will be difficult to define if the arrival times are irregular because of variations in refractor depth. It is often best to draw lines through only the direct-wave arrivals (which should plot on straight lines), leaving refracted arrivals either un-joined or linked only by faint lines between adjacent points.

4.0 CONCLUSION

In reflection surveying, the detecting instruments record seismic signals at a distance from the shot point that is large compared with the depth of the horizon to be mapped. The seismic waves must thus travel large horizontal distances through the earth, and the times required for the travel at various source-receiver distances give information on the velocities and depths of the subsurface formations along which they propagate. Although the refraction method does not give as much information or as precise and unambiguous a structural picture as reflection, it provides data on the velocity of the refracting beds. The method made it possible to cover a given area more quickly and economically than with the reflection method, though with a significant loss of detail and accuracy.

Despite its disadvantages, refraction is now rarely employed in oil exploration because of the larger-scale field operations required. Also, the reflection method has developed to the point that it can now yield nearly all of the information that refraction shooting could produce as well as relatively unambiguous and precise structural information unavailable from refracted waves.

5.0 SUMMARY

Refraction is particularly suitable where the structure of a high-speed surface, such as the basement or top of a limestone layer, is the target of geological interest. If the problem is to determine the depth and shape of a sedimentary basin by mapping the basement surface, and if the sedimentary rocks have a consistently lower seismic velocity than do the basement formations, refraction was in the past an effective and economical approach for achieving this objective. Airborne magnetics and, to some extent, gravity have replaced seismic refraction for such purposes. Because velocities in salt and evaporites are often greater than in surrounding formations, refraction has been useful in mapping diapiric features such as salt domes. Under favourable circumstances, this technique has been used to detect and determine the throw of faults in high-speed formations, such as dense limestone and basement materials.

6.0 TUTOR-MARKED ASSIGNMENT

1. What are principal refractors?
2. With the aid of a diagram, explain critical refraction at two interfaces.
3. Write short notes on the following:
 - a. Critical distance

- b. Annotation of field records
- c. Length of refraction spread
- d. A spread

7.0 REFERENCES/FURTHERREADING

Momoh K.O., Raimi J. & Lawal K.M. (2019). Seismic Refraction Survey for Foundation Investigation at Ahmadu Bello University Zaria Phase II, Kaduna State, Nigeria. FUDMA Journal of Sciences

(FJS)Vol. 3 No. 3, p. 161 - 167

<https://fjs.fudutsinma.edu.ng/index.php/fjs/article/view/1553>

John, M. (2003). *Field Geophysics*. (3rd ed.). England: John Wiley and Sons Ltd., p.249.

Kearey, P., Brooks, M. & Hill, I.(2002). *An Introduction to Geophysical Exploration*. (3rd ed.). Oxford: Blackwell Science, p.262.

Sharma, P.V. (1997). *Environmental and Engineering Geophysics*. Cambridge: Cambridge University Press, p. 475.

Telford, W. M., Geldart, L. P., Sheriff, R. E. & Keys, D. A. (1990). *Applied Geophysics*. (2nd ed.). Cambridge: Cambridge University Press, p. 770.

Whitely, R. J. (Ed.) (1981). *Geophysical Case Study of the Woodlawn Orebody, New South Wales, Australia*. Oxford: Pergamon Press, p. 588.

Video Link

UNIT 2 FIELDINTERPRETATION

CONTENTS

- 1.0 Introduction
- 2.0 Objectives
- 3.0 Main Content
 - 3.1 Intercept Times
 - 3.2 Multiple Layers
 - 3.3 Effect of Dip
 - 3.4 Refractor Relief and True Velocities
 - 3.4 Reciprocal Time Interpretation
- 4.0 Conclusion
- 5.0 Summary
- 6.0 Tutor-Marked Assignment
- 7.0 References/Further Reading

7.0 INTRODUCTION

Interpretation is an essential part of refraction fieldwork because the success of a survey depends on parameters such as line orientation, geophone spacing, shot positions and spread lengths, which can be varied almost at will. Only if analysis keeps pace with data collection will the right choices be made. Field interpretation has been made easier by computer programs that can be implemented on portable PCs or on the seismographs but such programs are based on very simple models and are not substitute for the actually data.

2.0 OBJECTIVES

At the end of this unit, you should be able to:

- give a descriptive interpretations of the more important field aspects
- show prominent practical interpretations of geophysical methods
- practicalise seismic refraction techniques.

3.0 MAIN CONTENT

3.1 Intercept Times

The intercept time t_i is defined as the time at which the back-extrapolated refracted arrival line cuts the time axis. For a single refractor, it is related to the velocities and the refractor depth by the equation:

$$t_1 = 2d\sqrt{(V_2^2 - V_1^2)/V_1 V_2} = 2d/V_{1,2}$$

The quantity $V_{1,2}$ is defined by this equation. It has the units of a velocity and is approximately equal to V_1 if V_2 is very much larger than V_1 . The critical angle is then almost 90° and the delay suffered by the refracted ray in travelling between the surface and the refractor is close to double the vertical travel time. If the difference between V_1 and V_2 is small, $V_{1,2}$ can be very large. Intercept times are conventionally obtained by drawing best-fit lines through the refracted arrival times but even a very good fit is no guarantee that the depth of the refractor does not change in the region near the shot point, from which no refractions are observed. If, however, a long shot is used, there should be a constant difference between long-shot and short-shot arrival times at points towards the far end of the spread (Figure 3.3).

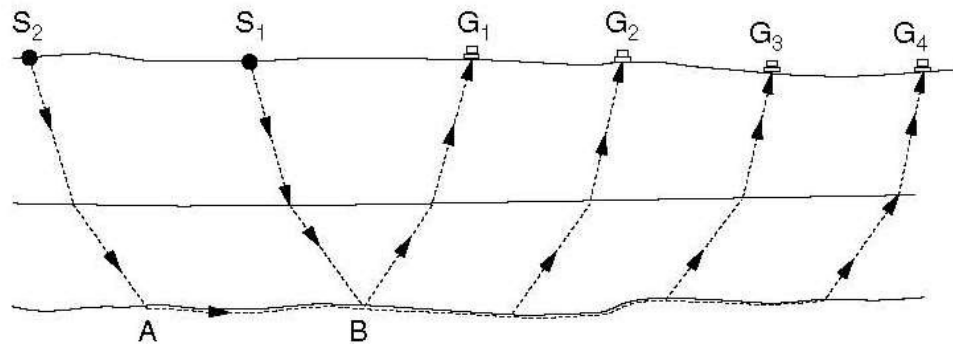


Fig.2.1: Long-shot and Short-shot Travel Paths for a Three-layer Case

The paths for energy travelling to the geophones from S_1 and S_2 via the lower refractor are identical from point B onwards. Upper refractor paths have been omitted for clarity.

An intercept time can then be obtained by subtracting this difference from the long-shot arrival time at the short-shot location, and this can be done exactly if there is a geophone in this position when the long shot is fired. Otherwise, use of the nearest long-shot arrival at least reduces the distance over which extrapolation must be made.

3.2 Multiple Layers

The intercept-time equation can be extended to cases involving a number of critically refracting layers. If the intercept time associated with the n th refractor is t_n , then:

$$t_n = 2d_1/V_{1,n+1} + 2d_2/V_{2,n+1} + \dots + 2d_n/V_{n,n+1}$$

Where dn is the thickness of the n th layer, which overlies the n th refracting interface, at which velocity increases from V_n to V_{n+1} . The definition of the various quantities $V_{m,n}$ is exactly analogous to the definition of $V_{1,2}$ cited above. The presence of intermediate layers may be recognized by comparing long- and short-shot data, but at least two points are needed to define a velocity and three for any confidence to be placed in the estimate. At best, therefore, only four layers can be easily investigated with a 12-channel system. Complicated field procedures can be devised to overcome this limitation; geophones may, for example, be moved one half-interval after a shot has been fired and the same shot-point can then be reused. Progress is extremely slow and the problems presented by refractor topography, hidden layers and blind zones (Section 3.3) still exist. In most circumstances, firing multiple shots into modified spreads represents an attempt to extract more from the method than is really obtainable.

3.3 Effect of Dip

Depths estimated from refraction surveys are related to geophone and shot point elevations, which must therefore be measured to obtain a true picture of the subsurface refractor. Furthermore, the “depths” determined are the perpendicular, not the vertical, distances to interfaces from shot points or geophones. With this proviso, “horizontal” formulae can be applied without modification wherever the ground surface and the refractor are parallel. More usually their slopes will be different. Formulae are then most commonly quoted in terms of a horizontal ground and dipping refractors, but can equally well be applied if the ground slopes above, for example, a horizontal water table.

The intercept-time equations require the true value of V_2 to be used. However, a wave that travels down-dip not only has to travel further at velocity V_2 to reach more distant geophones, but also further at the slow velocity V_1 in the upper layer (Figure 3.4). It therefore arrives late, with a low *apparent velocity*. The reverse is true shooting up-dip, when arrivals at further geophones may actually precede those at nearer ones. The slope of the line through the refracted arrivals on a time–distance plot depends on the dip angle, α , according to:

$$V_{app} = V_2 / (1 + \sin \alpha)$$

If shots are fired from both ends of the spread, different apparent velocities will be measured because the sign of the dip angle will differ. For dips of less than about 10° , the true velocity is given by the dip-velocity equation:

$$2/V_2 = 1/V_{up} + 1/V_{down}$$

3.4 Refractor Relief and True Velocities

Most refractors, except the water table, are irregular. If there were only a single local depression in an otherwise flat refractor, refracted arrivals from shots in opposite directions would plot on straight lines of equal slope, and the differences between the two arrival times at each geophone would plot on a line with double this slope. The exception to this rule would seem to be the geophone immediately above the depression.

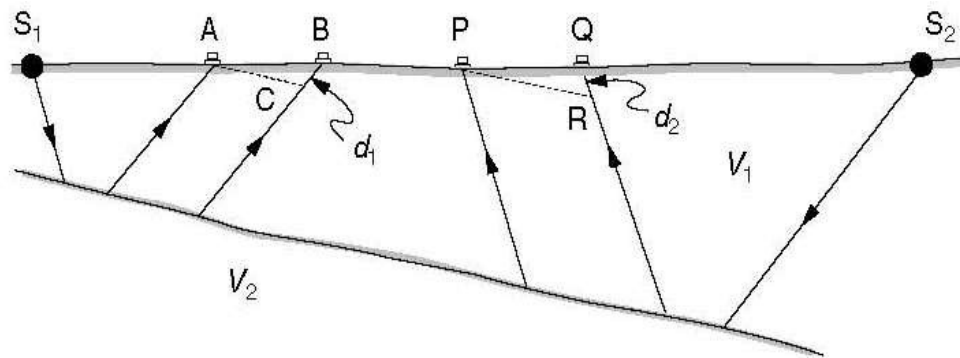


Fig. 2.2: Refraction at a Dipping Interface

The refracted energy from S1 arrives later at B than at A not only because of the greater distance travelled along the refractor but also because of the extra distance d_1 travelled in the low velocity layer. Energy from S2 arrives earlier at P than would be predicted from the time of arrival at Q, by the time taken to travel d_2 at velocity V_1 . The lines AC and PR are parallel to the refractor.

However, both waves would arrive late at this point (Figure 2.3) and, for small dips; the delays would be very similar. The difference between the arrival times would thus be almost the same as if no depression existed, plotting on the straight line generated by the horizontal parts of the interface. The argument can be extended to a refractor with a series of depressions and highs. Provided that the dip angles are low, the difference points will plot along a straight line with slope corresponding to half the refractor velocity. Where a refractor has a constant dip, the slope of the difference line will equal to the dip velocity equation. The sum of the slopes of the individual lines, giving a graphical expression:

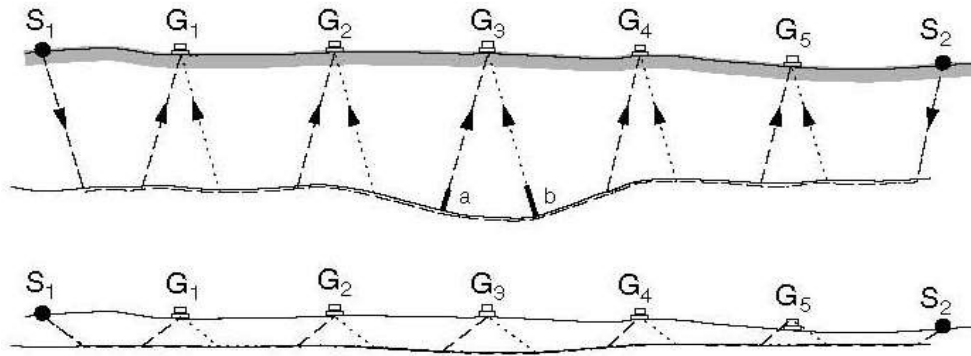


Fig. 2.3: Effect on Travel Times of a Bedrock Depression

The arrivals at G3 of energy from S1 and S2 are delayed by approximately the same amounts 'a' and 'b'). Note that, as in all the diagrams in this chapter, vertical exaggeration has been used to clarify travel paths. The lower version gives a more realistic picture of the likely relationships between geophone spacing and refractor depths and gradients.

The approach described above generally works far better than the very qualitative 'proof' (and the rather contrived positioning of the geophones in Figure 2.3) might suggest. Changes in slopes of difference lines correspond to real changes in refractor velocity, so that zones of weak bedrock can be identified. The importance of long shots is obvious, since the part of the spread over which the first arrivals from the short shots at both ends have come via the refractor is likely to be rather short and may not even exist. It is even sometimes possible, especially when centre shots have been used, for the differencing technique to be applied to an intermediate refractor. Differences are easily obtained directly from the plot using dividers, or a pencil and a straight-edged piece of paper. They are plotted using an arbitrary time zero line placed where it will cause the least confusion with other data.

3.5 Reciprocal Time Interpretation

The *reciprocal time*, t_R , is defined as the time taken for seismic energy to travel between the two long-shot positions. The difference between t_R and the sum of the travel times t_A and t_B from the two long-shots to any given geophone, G, is:

$$t_A + t_B - t_R = 2D/F$$

where D is the depth of the refractor beneath G and F is a *depth conversion factor* (Figure 2.4). If there is only a single interface, D is equal to the thickness, d , of the upper layer and F is equal to $V_{1,2}$. If there are more interfaces, F is a composite of all the velocities involved,

weighted according to the layer thicknesses. At the short shots $2D/F = t_i$ (the intercept time) and the F values can be calculated. The ways in which F varies between these points may be very complex, but linear interpolation is usually adequate in the field (Example 3.1).

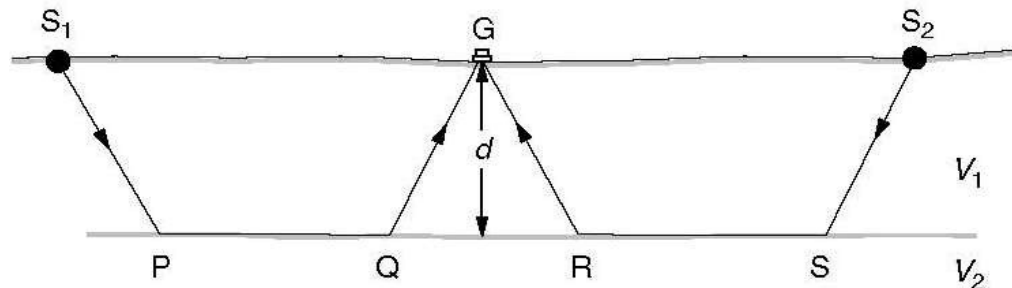


Fig. 2.4: Reciprocal Time Interpretation

The sum of the travel times from S_1 and S_2 to G differs from the reciprocal time, t_R , taken to travel from S_1 to S_2 by the difference between the times taken to travel QR at velocity V_2 and QGR at velocity V_1 .

Although t_R can be measured directly, it is more convenient to calculate it from the equation above using the intercept times. This can be done provided that geophones are located at the short-shot points when the long shots are fired (so that $t_A + t_B$ at those points can be measured). The estimates of t_R made using the data from the two ends should agree within the limits of error of the method (i.e. within $1-2 \text{ ms}^{-1}$). If they are not, the raw data and the calculations should be thoroughly checked to find the reason for the discrepancy. Short-shot reciprocal times are measured directly if short-shots are fired at end-geophone positions, and the fact that they should be equal may help in picking arrivals. However, they have little interpretational significance.

4.0 CONCLUSION

The science of seismology dates from the invention of the seismograph by the English scientist John Milne in 1892. Its name derives from its ability to convert an unfelt ground vibration into a visible record. The seismograph consists of a receiver and a recorder. The ground vibration is detected and amplified by a sensor, called the seismometer or, in exploration seismology, the geophone. In modern instruments the vibration is amplified and filtered electronically. The amplified ground motion is converted to a visible record, called the seismogram.

5.0 SUMMARY

Early seismographs were undamped and reacted only to limited band of seismic frequencies. Seismic waves with inappropriate frequencies were barely recorded at all, but strong waves could set the instrument into resonant vibration. In 1903, the German seismologist Emil Vie chart substantially increased the accuracy of the seismograph by improving the amplification method and by damping the instrument. These early instruments relied on mechanical levers for amplification and recording signals on smoked paper. This made them both bulky and heavy, which severely restricted their application.

6.0 TUTOR-MARKED ASSIGNMENT

1. What are intercept times?
2. Explain by the use of diagrams, the reciprocal time interpretations.
3. Differentiate between refractor relief and true velocity.

7.0 REFERENCES/FURTHER READING

Hawkins, L. V. (1961). The Reciprocal Method of Routine Shallow Seismic Refraction Investigations. *Geophysics*, 26, 806–19.

John, M. (2003). *Field Geophysics*. (3rd ed.). England: John Wiley and Sons Ltd., p.249.

Kearey, P., Brooks, M. & Hill, I. (2002). *An Introduction to Geophysical Exploration*. (3rd ed.). Oxford: Blackwell Science, p.262.

Sharma, P.V. (1997). *Environmental and Engineering Geophysics*. Cambridge: Cambridge University Press, p. 475.

Telford, W. M., Geldart, L. P., Sheriff, R. E. & Keys, D. A. (1990). *Applied Geophysics*. (2nd ed.). Cambridge: Cambridge University Press, p. 770.

Whitely, R. J. (Ed.) (1981). *Geophysical Case Study of the Woodlawn Orebody, New South Wales, Australia*. Oxford: Pergamon Press, p. 588.

Video Link1

Video Link2

Video Link3

UNIT3 LIMITATION OF REFRACTIONMETHODS

CONTENTS

- 1.0 Introduction
- 2.0 Objectives
- 3.0 Main Content
 - 3.1 Direct Waves
 - 3.2 Vertical Velocities
 - 3.3 Hidden Layers
 - 3.4 Blind Zones
- 4.0 Conclusion
- 5.0 Summary
- 6.0 Tutor-Marked Assignment
- 7.0 References/Further Reading

1.0 INTRODUCTION

First-arrival refraction work uses only a small proportion of the information contained in the seismic traces, and it is not surprising that interpretation is subject to severe limitations. These are especially important in engineering work; in low-velocity-layer studies only a time delay estimate is sought and short shots alone are often sufficient.

2.0 OBJECTIVES

At the end of this unit, you should be able to:

- explain the prominent practical limitations of the geophysical methods
- identify different techniques applicable in low velocity layer environment.

3.0 MAINCONTENT

3.1 Direct Waves

The *ground roll* consists of a complex of P-and S-body waves, and Love and Rayleigh surface waves. These waves travel with different but generally slow velocities. There is often some doubt as to which component actually produces the first break, since conventional geophones respond only poorly to the horizontal ground motions of direct P-waves. Close to the source, enough energy is associated with the P-waves for the response to be measurable, but at greater distances, the first breaks may record the arrival of S-waves, surface waves or even

the airwave.

The complex character of the direct wave may be among the reasons for the commonly observed failure of the best-fit arrival line to pass through the origin. Delays in the timing circuits may also play a part but can be determined by direct experiment, with a detonator or a light hammer blow close to a geophone. A more important reason may be that the amplifier gains at geophones close to the shot point have been set so low that the true first arrivals have been overlooked (Figure 3.7). Full digital storage of the incoming signals should allow the traces to be examined individually over a range of amplifications, but if this is not possible, then the most reliable velocity estimates will be those that do not treat the origin as a point on the line.

3.2 Vertical Velocities

However, much care is taken to obtain valid direct-wave or refracted-wave velocities. The refraction method is fundamentally flawed in that the depth equations require vertical velocities but what are actually measured are horizontal velocities. If there is significant anisotropy, errors will be introduced.

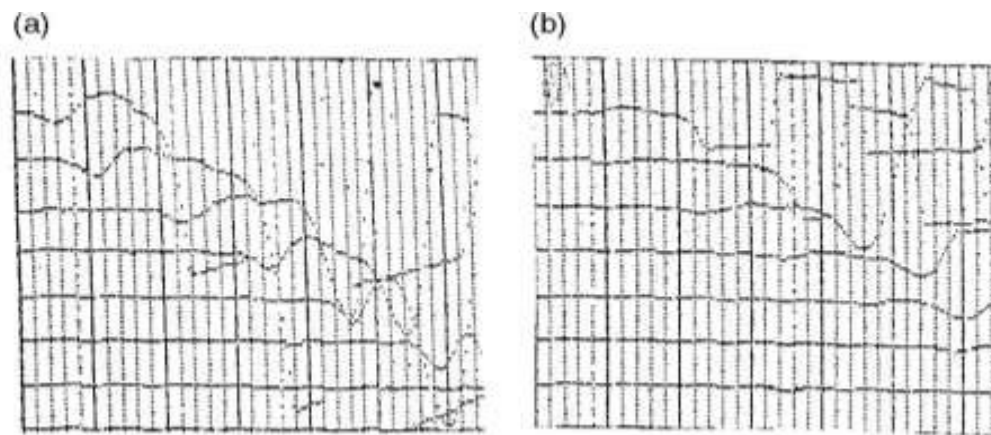


Fig.3.1: Hard Copy of a Single Stored Data Set Played Back at Two Different Amplifications

The first arrivals clearly visible on (a) would probably be overlooked or dismissed as noise on (b). A direct wave velocity based on (b) would be roughly correct provided that the best-fit line was not forced through the origin. The cross-over distance would also be wrong but the intercept time would not be affected, provided that the refracted arrivals were amplified sufficiently.

This is a problem for interpreters rather than field observers but the latter should at least be aware of the importance of using any boreholes or recent excavations for calibration or to measure vertical velocities

directly.

3.3 Hidden Layers

A refractor that does not give rise to any first arrivals is said to be hidden. A layer is likely to be hidden if it is much thinner than the layer above and has a much lower seismic velocity than the layer below. Weathered layers immediately above basement are often hidden. The presence of a hidden layer can sometimes be recognised from second arrivals but this is only occasionally possible, in part because refracted waves are strongly attenuated in thin layers.

A layer may also be hidden even if the head wave that it produces does arrive first over some part of the ground surface, if there are no appropriately located geophones. Concentrating geophones in the critical region can sometimes be useful (although never convenient) but the need to do so will only be recognized if preliminary interpretations are being made on a daily basis.

3.4 Blind Zones

If velocity decreases at an interface, critical refraction cannot occur and no refracted energy returns to the surface. Little can be done about these *blind* interfaces unless vertical velocities can be measured directly. Thin high-velocity layers such as perched water tables and buried terraces often create blind zones. The refracted waves within them lose energy rapidly with increasing distance from the source and ultimately become undetectable. Much later events may then be picked as first arrivals, producing discontinuities in the time–distance plot. A similar effect is seen if the layer itself ends abruptly.

Example 3.1

Field interpretation of a four-shot refraction spread with long shot (LS) and short shot (SS) arrivals from west (W) and east (E) ends plotted on same set of axes (Figure 3.2). After plotting the data, interpretation proceeds in the following stages.

Stage 1 Base refractor intercept times:

Measure LS(W)–SS(W) time differences. These are roughly constant and close to 41 ms from G6 to G12, indicating that in this region the SS(W) arrivals have come from base refractor. Similarly, LS(E)–SS(E) time differences are close to 59 ms, from G1 to G4.

Intercept times: LS(W) time at W end = 101 ms. Intercept time = $101 - 41 = 60$ ms.

LS(E) time at E end = 208 ms.

Intercept time = $208 - 59 = 149$ ms.

Note the LS(E) difference from the extrapolated intercept time of about 170 ms.

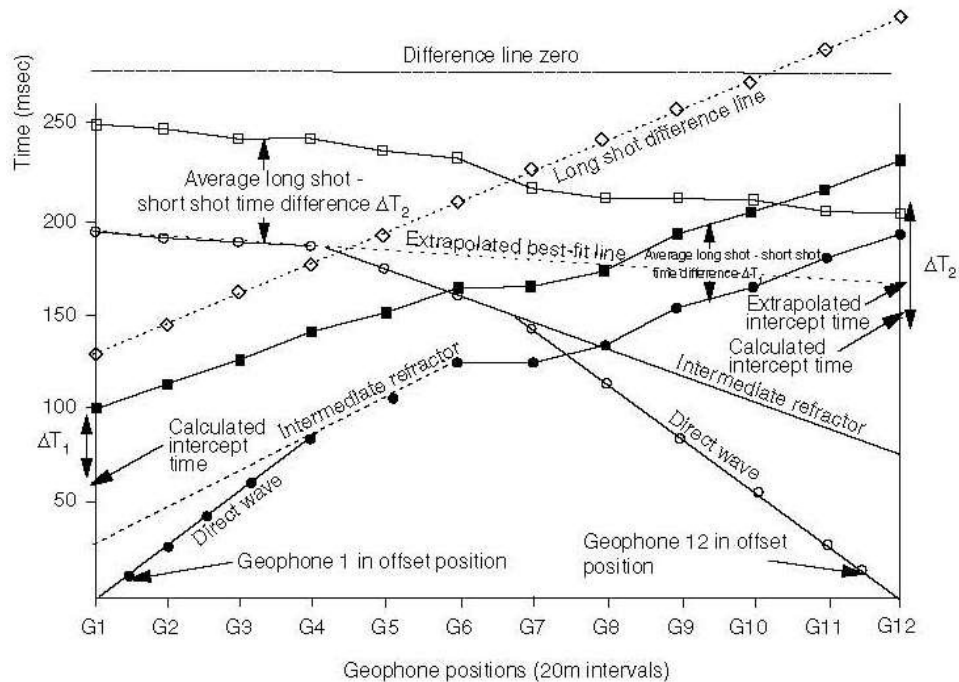


Fig.3.2: Time-distance Plot for a Four-shot Refraction Spread

The long shot difference times, indicated by open circles, are referred to a zero line arbitrarily placed at $t = 280 \text{ ms}^{-1}$. Note the difference between the intercept time obtained by extrapolation of short-shot data and by using long-shot-short-shot difference times, for the G12 position. Extrapolation of the refracted arrival line back to zero time would be even more difficult for the G1 position and could lead to an even more erroneous interpretation. West is to the left of the plot (Example3.1).

Stage 2 Velocities:

Direct-wave velocity

Straight line from W origin through nearby SS(W) arrivals extends 60 m to G4.

Velocity $V1 = 60/0.079 = 759 \text{ ms}^{-1}$

Straight line from E origin through nearby SS(E) arrivals extends 100 m to G7.

$$\text{Velocity } V1 = 100/0.134 = 746 \text{ ms}^{-1} \text{ Average } V1 \text{ value} = 750 \text{ ms}^{-1}$$

Intermediate refractor

Arrivals at G5 from SS(W) and at G5 and G6 from SS(E) do not belong to the “base refractor” sets (see Stage 1) nor do they fall on the direct-wave arrival line, suggesting the presence of an intermediate, “V2”, refractor. The V2 velocity is poorly controlled but the arrivals lines should pass above all direct wave (V1) and base refractor first arrivals. For the most likely positions, as shown;

$$\text{SS(W): } V2 = 1470 \text{ ms}^{-1} \text{ Intercept time} = 29 \text{ ms} \quad \text{SS(E): } V2 = 1560$$

$$\text{ms}^{-1} \text{ Intercept time} = 77 \text{ ms}$$

These velocities suggest that the interface is probably the water table, with a velocity of about 1500 ms⁻¹.

Base refractor velocity

Plot LS(W)–LS(E) time differences at each geophone, using a convenient (280 ms) line as time zero.

$$V3 = 2/(\text{slope of difference line}) = 2 \times 220/0.182 = 2420 \text{ ms}^{-1}$$

Velocity functions

$$V1,2 = V1 \times V2 / (V2 - V1) = 750 \times 1500 / (1500 - 750) = 870 \text{ ms}^{-1}$$

$$V1,3 = V1 \times V3 / (V3 - V1) = 750 \times 2420 / (2420 - 750) = 790 \text{ ms}^{-1}$$

$$V2,3 = V2 \times V3 / (V3 - V2) = 1500 \times 2420 / (2420 - 1500) = 1910 \text{ ms}^{-1}$$

Stage 3 Depths at shot points

Depths to intermediate refractor ($d1 = 12t/V1,2$)

$$\text{W end: } d1 = 12 \times 0.029 \times 870 = 12.6 \text{ m}$$

$$\text{E end: } d1 = 12 \times 0.077 \times 870 = 33.5 \text{ m}$$

Thickness of intermediate layer ($d_2 = 12 [t_i - 2d_1/V_{1,3}] \times V_{2,3}$)

$$\text{W end: } d_2 = 12 \times \{0.060 - 25.2/790\} \times 1910 = 26.8 \text{ m}$$

$$D = 26.8 + 12.6 = 39.4 \text{ m}$$

$$\text{E end: } d_2 = 12 \times \{0.149 - 67.0/790\} \times 1910 = 61.3 \text{ m}$$

$$D = 33.5 + 61.3 = 94.8 \text{ m}$$

*Stage (4) Reciprocal time interpretation (example using Geophone 8)***Reciprocal time ($t_A + t_B - t_i$)**

$$\text{W end: } t_R = 101 + 254 = 295 \text{ ms}$$

$$\text{E end: } t_R = 233 + 208 - 149 = 292 \text{ ms}$$

$$\text{Average} = 293 \text{ ms}$$

Depth conversion factors at short shots ($F = 2 \times D/t_i$)

$$\text{W end: } F = 2 \times 39.4/0.060 = 1310 \text{ ms}^{-1} \quad \text{E end: } F = 2 \times 94.8/0.149 = 1270 \text{ ms}^{-1}$$

$$F \text{ at G8 (by interpolation)} = 1280 \text{ ms}^{-1}$$

Depth at G8 ($D = t_A + t_B - t_R$)

$$D = 12 \times (0.174 + 0.213 - 0.293) \times 1280 = 60.2 \text{ m}$$

4.0 CONCLUSION

Despite the limitations of refraction surveys, interpretations are not always wrong when they disagree with drill hole data. Only a very small subsurface volume is sampled by the drill, and many drill tests of drift thickness have been terminated in isolated boulders some distance above the true top of bedrock. It is always important that explanations are found for any differences between drilling and seismic results.

5.0 SUMMARY

The complex character of the direct wave may be among the reasons for the commonly observed failure of the best-fit arrival line to pass through the origin. Delays in the timing circuits may also play a part but can be determined by direct experiment, with a detonator or a light hammer blow close to a geophone.

6.0 TUTOR-MARKED ASSIGNMENT

- i. Write short notes on the following:
 - a. Direct Waves
 - b. Hidden layers
 - c. Blind zones
 - d. Intermediate refractor

7.0 REFERENCES/FURTHER READING

- Xia J., Miller, R. D., Park, C. B., Wightman, Ed., & Nigbor R. (2002). A Pitfall in Shallow Shear-Wave Refraction Surveying. *Journal of Applied Geophysics* 51 (2002) 1–9 <https://www.sciencedirect.com/science/article/abs/pii/S0926985102001970?via%3Dihub>
- John, M. (2003). *Field Geophysics*. (3rd ed.). England: John Wiley and Sons Ltd., p. 249.
- Kearey, P., Brooks, M. & Hill, I. (2002). *An Introduction to Geophysical Exploration*. (3rd ed.). Oxford: Blackwell Science, p. 262.
- Sharma, P. V. (1997). *Environmental and Engineering Geophysics*. Cambridge: Cambridge University Press, p. 475.
- Telford, W. M., Geldart, L. P., Sheriff, R. E. & Keys, D. A. (1990). *Applied Geophysics*. (2nd ed.). Cambridge: Cambridge University Press, p. 770.
- Whitely, R. J. (Ed.) (1981). *Geophysical Case Study of the Woodlawn Orebody, New South Wales, Australia*. Oxford: Pergamon Press, p. 588.